

GRAND FORKS, NORTH DAKOTA

RNAV (GPS) RWY 35

APCH CRS	Rwy Idg	12,351
354°	TDZE	911
	Arpt Elev	911

AL-5010 (USAF)

GRAND FORKS AFB (KRDR)

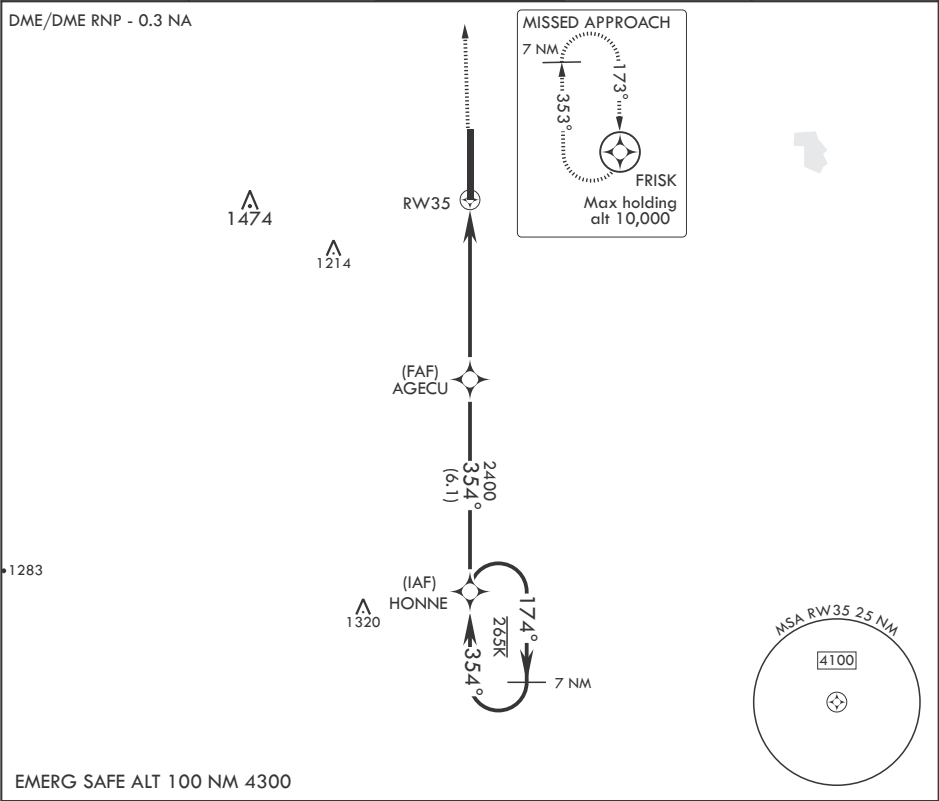
\* When ALS inop, increase CAT AB RVR to 55 and vis to 1 mile,  
CAT CDE vis to 1 3/8 miles.  
\*\* Circling E of Rwy 17-35 not authorized.

ALSF-1




MISSED APPROACH: Climb to 3000 direct FRISK and hold.

ATIS 273.45	APP CON 118.1 318.1	RED RIVER TOWER 124.9 349.0	GND CON 119.15 275.8	CLNC DEL 119.15 360.7
----------------	------------------------	--------------------------------	-------------------------	--------------------------




EMERG SAFE ALT 100 NM 4300

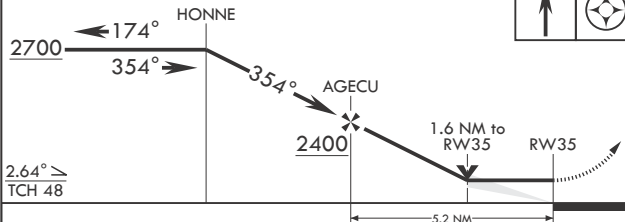
3000 FRISK



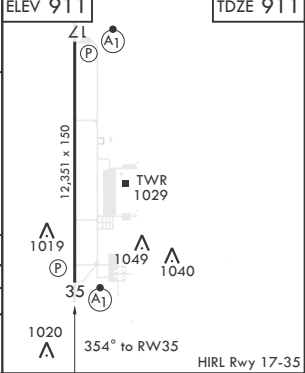
ELEV 911



TDZE 911



CATEGORY	A	B	C	D	E
LNAV MDA*	1400/24 489 (500-1/2)		1400/50 489 (500-1)		
CIRCLING**	1400-1 489 (500-1)		1400-1 1/2 489 (500-1 1/2)	1480-2 569 (600-2)	2040-3 1129 (1200-3)



GRAND FORKS, NORTH DAKOTA

47°58'N - 97°24'W

GRAND FORKS AFB (KRDR)

Orig 25MAY17

RNAV (GPS) RWY 35

NC-1, 03 DEC 2020 to 31 DEC 2020

NC-1, 03 DEC 2020 to 31 DEC 2020