
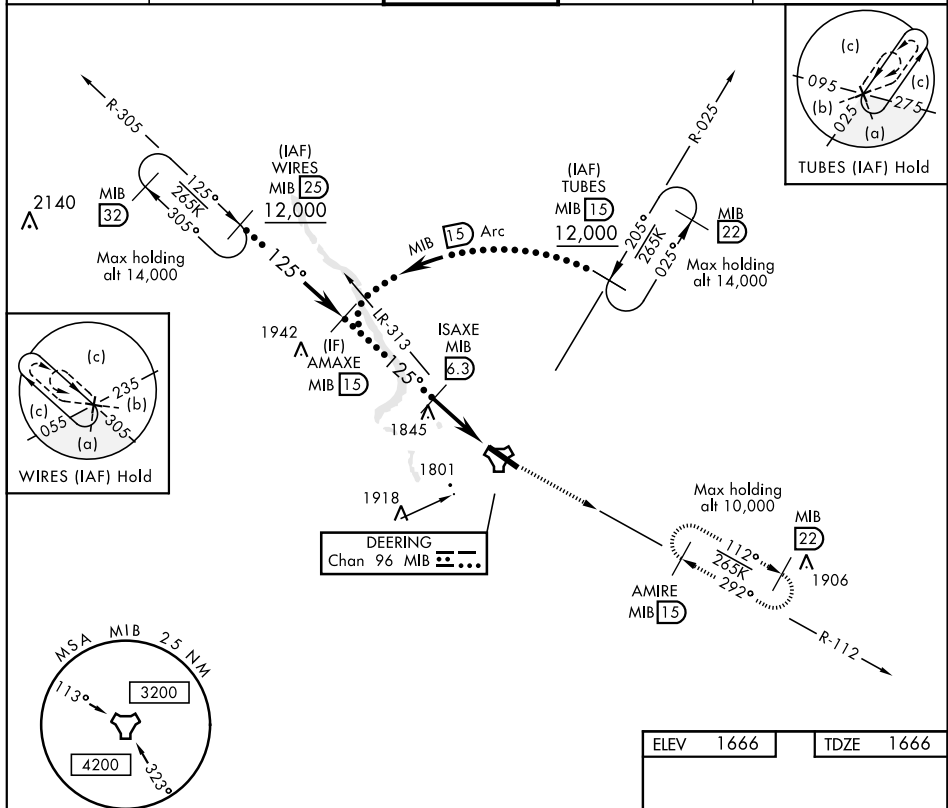


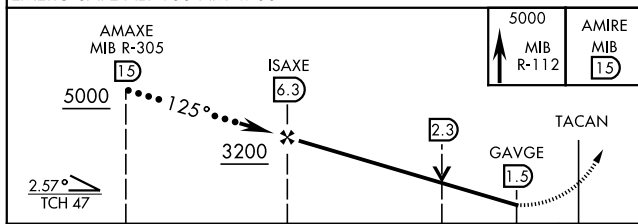
MINOT, NORTH DAKOTA


HI-TACAN Z RWY 12

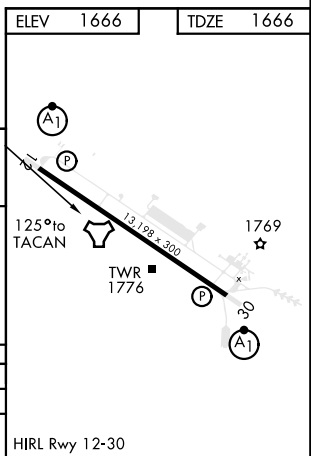
|   |                                     |  |   |   |
|---|-------------------------------------|--|---|---|
| TACAN MIB<br>Chan <b>96</b>   | APCH CRS<br><b>125°</b>             | Rwy Idg <b>13,198</b><br>TDZE <b>1666</b><br>Arpt Elev <b>1666</b> | JAL-5013 [USAF]   | MINOT AFB (KMIB)  |
| * When ALS inop, increase CAT CDE vis to 1 1/4 miles.<br>** Circling not authorized N of Rwy 12-30. |                                     |  | ALSF-1<br> | MISSED APPROACH: Climb to 5000 via MIB TACAN R-112 direct AMIRE and hold. |
| ATIS ★<br><b>278.8</b>  | MINOT APP CON<br><b>119.6 363.8</b> | MINOT TOWER ★<br><b>120.65 253.5</b>                               | GND CON<br><b>134.0 275.8</b>   | CLNC DEL<br><b>326.2</b>  |



EMERG SAFE ALT 100 NM 4700



|                     |   |                    |   |
|---------------------|---|--------------------|---|
|                     |  |                    |   |
| CATEGORY            | C   | D                  | E |
| S-12*               | 2100/40 434 (500- <del>3</del> )  |                    |   |
| <b>C</b> CIRCLING** | 2180-1½<br>514 (600-1½)   | 2220-2 554 (600-2) |   |



MINOT, NORTH DAKOTA

48°25'N-101°21'W

MINOT AFB (KMIB)

Orig 21JUL16

## HI-TACAN Z RWY 12