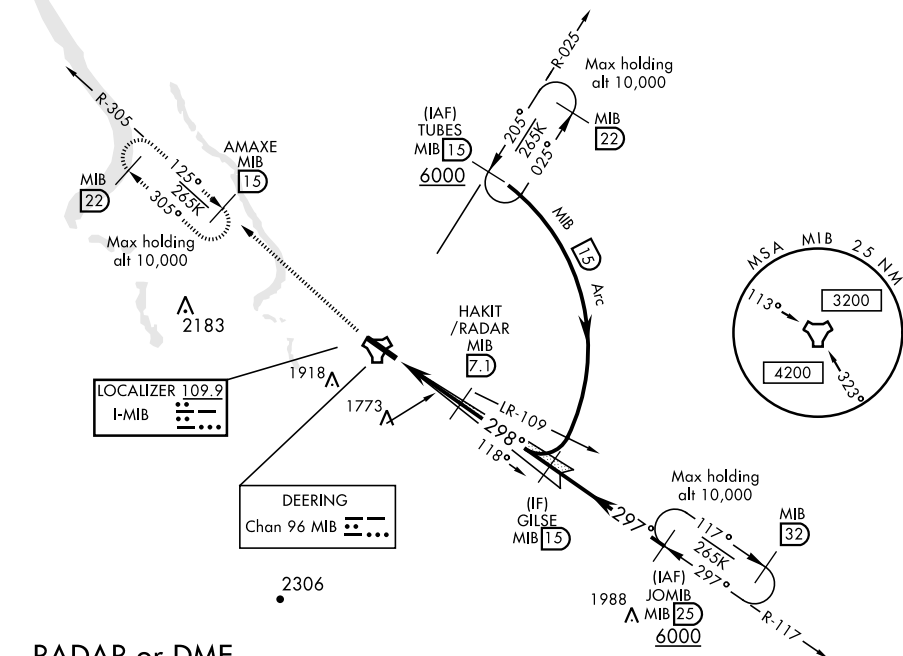


## ILS or LOC Y RWY 30

LOC I-MIB <b>109.9</b>	APCH CRS <b>298°</b>	Rwy Idg <b>13,198</b> TDZE <b>1646</b> Arpt Elev <b>1666</b>	AL-5013 [USAF]	MINOT AFB (KMIB)
* When ALS inop, increase CAT ABCDE RVR to 40 and vis to ¾ mile. ** When ALS inop, increase CAT AB RVR to 55 and vis to 1 mile, CAT CDE RVR to 60 and vis to 1½ miles.			ALSF-1 <b>(A1)</b>	MISSED APPROACH: Climb to 5000 via MIB TACAN R-305 direct AMAXE and hold.
ATIS ★ <b>278.8</b>	MINOT APP CON <b>119.6 363.8</b>	MINOT TOWER ★ <b>120.65 253.5</b>	GND CON <b>134.0 275.8</b>	CLNC DEL <b>326.2</b>

\*\*\* Circling not authorized N of Rwy 12-30.

RADAR or DME  
REQUIRED

EMERG SAFE ALT 100 NM 4700

5000

↑

MIB

R-305

AMAXE

MIB

15

HAKIT /RADAR

MIB

7.1

GILSE

R-117

15

5000

†LOC only

↑2.7

↓

TACAN

↑

FAREG

1.9

6 NM

5.2 NM

3200

298°

GS 2.50°

TCH 49°

CATEGORY	A	B	C	D	E
S-ILS 30 *	1846/24		200	(200-½)	
S-LOC 30 **	2040/24	394 (400-½)	2040/35	394	(400-¾)
<div>C</div> <div>CIRCLING</div> <div>***</div>	2120-1 454 (500-1)	2140-1 474 (500-1)	2180-1½ 514 (600-1½)	2220-2	554 (600-2)

ELEV 1666	TDZE 1646
HIRL Rwy 12-30 FAF to MAP 5.2 NM	
Knots	60 90 120 150 180
Min:Sec	5:12 3:28 2:36 2:05 1:44

## ILS or LOC Y RWY 30