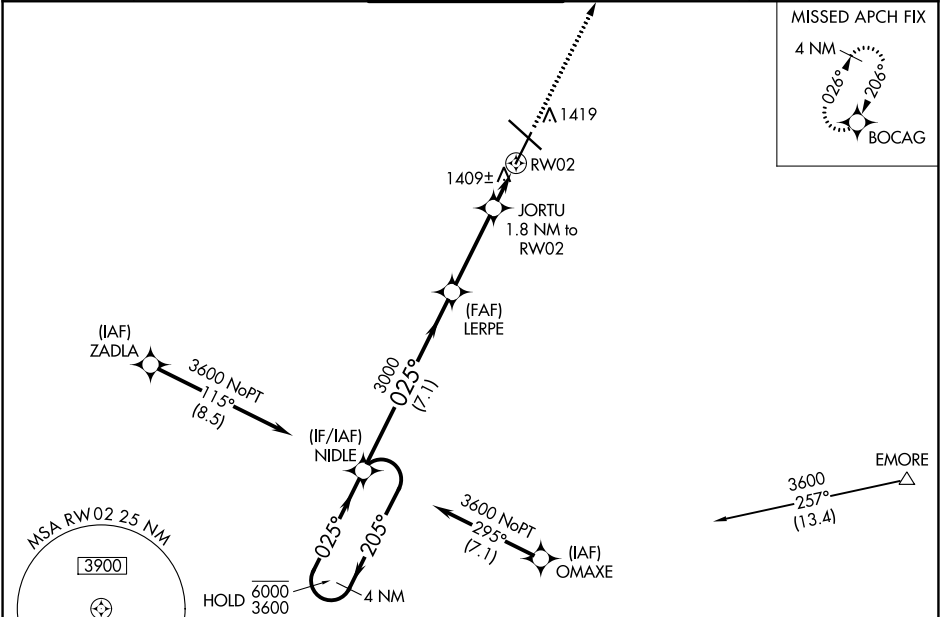


WAAS CH 69621 W02A	APP CRS 025°	Rwy Idg TDZE Apt Elev	7300 1317 1317
--	------------------------	-----------------------------	---

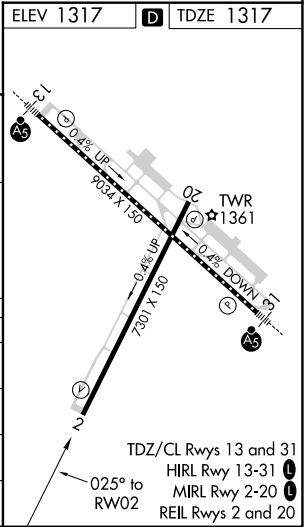
RNAV (GPS) RWY 2
ROCHESTER INTL (RST)

RNP APCH.	MISSED APPROACH: Climb to 3400 direct BOCAG and hold, continue climb-in-hold to 4800.
ASR For uncompensated Baro-VNAV systems, LNAV/VNAV NA below -28°C or above 54°C.	

ATIS 120.5	ROCHESTER APP CON ★ 119.8 251.125	ROCHESTER TOWER ★ 118.3 (CTAF) 257.8	GND CON 121.9	UNICOM 122.95
----------------------	---	--	-------------------------	-------------------------



4 NM Holding Pattern		NIDLE		LERPE		JORTU 1.8 NM to RWY 02		3400 BOCAG	
6000 ← 205°		3600 → 025°		3000		*0.9 NM to RWY 02		*LNAV only.	
GP 3.00°		TCH 47		3000		*1920		RWY 02	
		7.1 NM		3.4 NM		0.9		0.9	
CATEGORY	A	B	C	D					
LPV DA	1567-1		250 (300-1)						
LNAV/VNAV DA	1592-1		275 (300-1)						
LNAV MDA	1660-1		343 (400-1)						
CIRCLING	1720-1 403 (500-1)	1780-1 463 (500-1)	1900-1½ 583 (600-1½)	1900-2 583 (600-2)					



NC-1, 03 DEC 2020 to 31 DEC 2020

NC-1, 03 DEC 2020 to 31 DEC 2020