


LOC/DME I-ONA <u>109.35</u> Chan 30 (Y)	APP CRS 300°	Rwy Idg 5199 TDZE 656 Apt Elev 656
---	------------------------	---

ILS Y or LOC Y RWY 30
WINONA MUNI-MAX CONRAD FIELD (ONA)

 DME required. VDP NA with La Crosse altimeter setting. When local altimeter setting not received, use La Crosse altimeter setting and increase S-ILS 30 DA to 1127 and all visibilities 1/8 mile, increase all MDA 60 feet, and visibility S-LOC 30 Cat C/D 1/8 mile, and Circling Cat B 1/4 mile. For inop ALS, increase S-ILS 30 all Cats visibility to 1 1/8 mile, increase S-LOC 30 Cats C/D visibility to 1 1/8 mile. For inop ALS when using La Crosse altimeter setting, increase S-ILS 30 all Cats visibility to 1 1/8 mile, increase S-LOC 30 Cats C/D visibility to 1 1/4 mile.

MALSR

MISSED APPROACH:
Climb to 1800 then
climbing left turn to
3000 on RST VOR/
DME R-056 to VUZID
INT and hold.

AWOS-3 118.075	MINNEAPOLIS CENTER 128.6 363.0	UNICOM 122.8 (CTAF) 0
--------------------------	--	---------------------------------

DME REQUIRED

Λ 1447

ALTERNATE MISSED APCH FIX

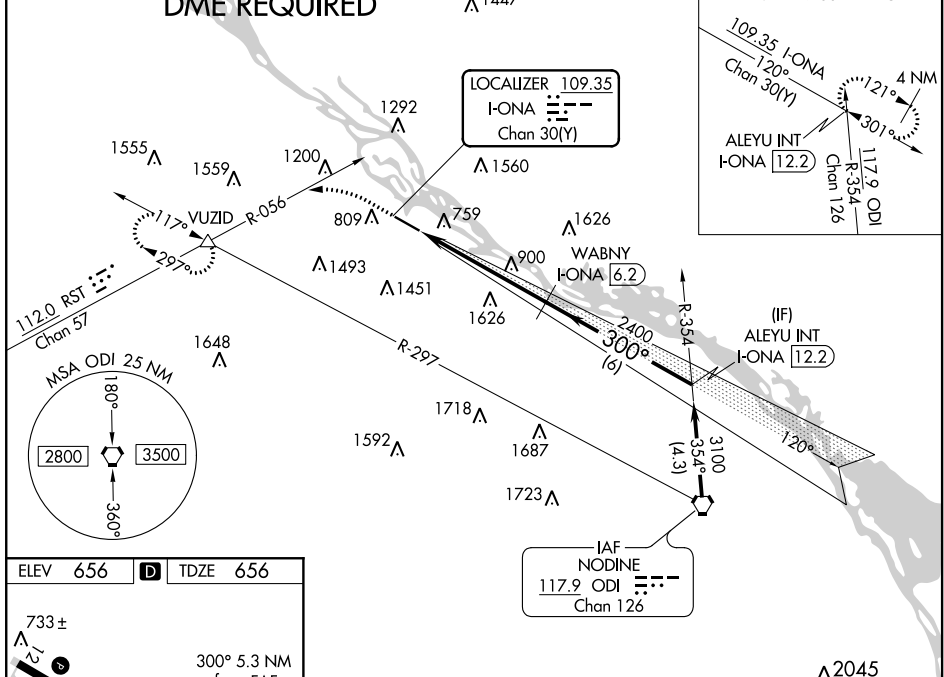


Diagram illustrating the ILS and LOC for Runway 12-30. The diagram shows the runway layout with various navigation aids and distances. Key features include:

- Runway 12-30 (5579 x 100 ft)
- Runway 12-30 (737 ± ft)
- Runway 12-30 (712 ft)
- Runway 12-30 (737 ± ft)
- Runway 12-30 (712 ft)
- Runway 12-30 (737 ± ft)
- Runway 12-30 (712 ft)
- Runway 12-30 (737 ± ft)
- Runway 12-30 (712 ft)
- Runway 12-30 (737 ± ft)