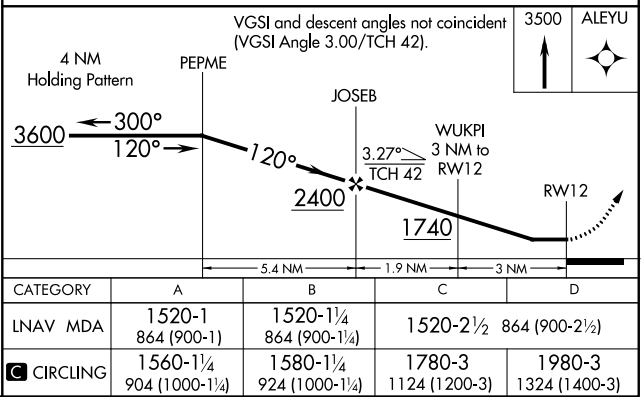
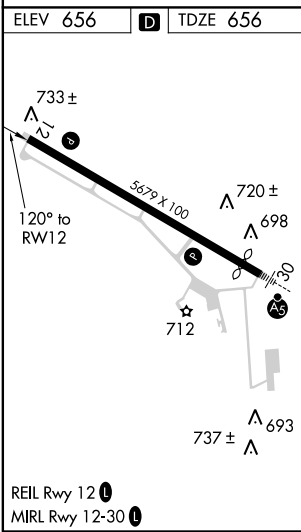
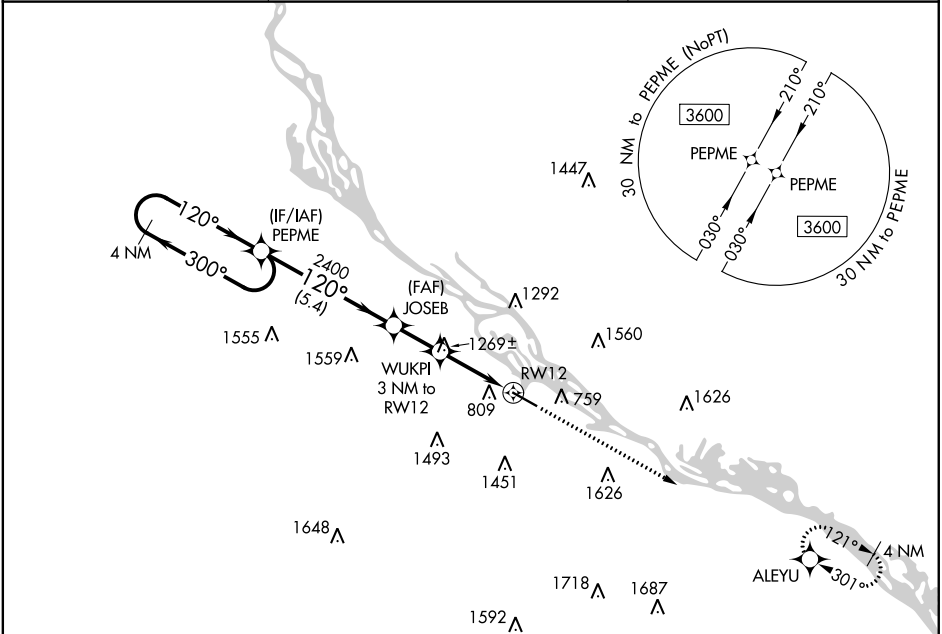


APP CRS	Rwy Idg	5199
120°	TDZE	656
	Apt Elev	656

RNAV (GPS) RWY 12  
WINONA MUNI-MAX CONRAD FIELD (ON A)

<div><div></div><div></div></div> <div>Rwy 12 helicopter visibility reduction below ¾ NA. DME/DME RNP-0.3 NA.</div>	MISSED APPROACH: Climb to 3500 direct ALEYU and hold.
---	---

AWOS-3 118.075	MINNEAPOLIS CENTER 128.6 363.0	UNICOM 122.8 (CTAF) 0
-------------------	-----------------------------------	--------------------------



NC-1, 03 DEC 2020 to 31 DEC 2020

NC-1, 03 DEC 2020 to 31 DEC 2020