

VOR/DME JAY	APP CRS	Rwy Idg	5800
108.2	173°	TDZE	1234
Chan 19		Apt Elev	1234

VOR RWY 17

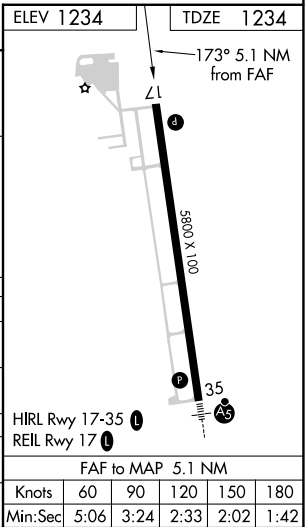
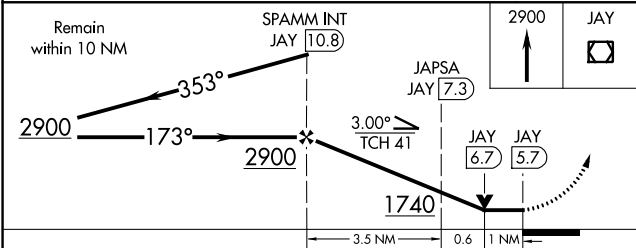
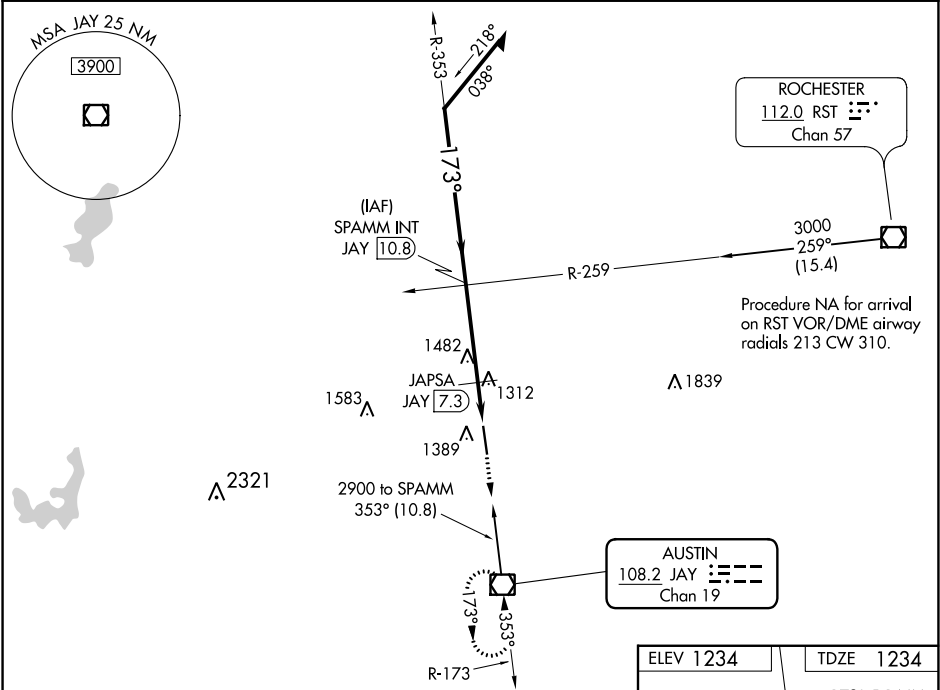
AUSTIN MUNI (AUM)

NA

Helicopter visibility reduction below ¾ SM NA.

MISSED APPROACH: Climb to 2900 direct JAY VOR/DME and hold.

AWOS-3 119.025	ROCHESTER APP CON ★ 119.8 251.125	UNICOM 122.7 (CTAF) 0
-------------------	--------------------------------------	--------------------------



CATEGORY	A	B	C	D
S-17	1740-1	506 (600-1)	1740-1 3/8	506 (600-1 3/8)
CIRCLING	1740-1	506 (600-1)	1800-1 1/2	1880-2
			566 (600-1 1/2)	646 (600-2)
JAPSA DME FIX MINIMUMS				
S-17	1600-1 366 (400-1)			
CIRCLING	1700-1	466 (500-1)	1800-1 1/2	1880-2
			566 (600-1 1/2)	646 (700-2)