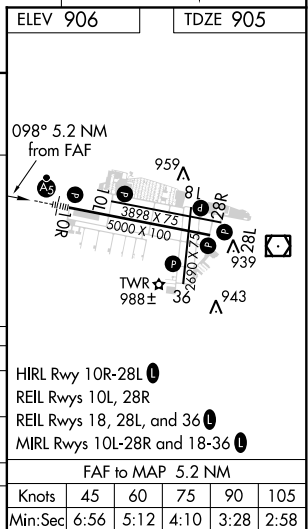
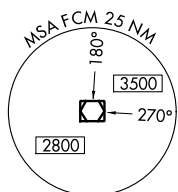


COPTER ILS or LOC RWY 10R
FLYING CLOUD (FCM)

MALSR

MISSED APPROACH: Climb to 1600 then climbing right turn to 2600 direct FCM VOR/DME and hold, continue climb-in-hold to 2600.

CLNC DEL
121.7
(When twr closed)



HIRL Rwy 10R-28L 1					
REIL Rwy 10L, 28R					
REIL Rwy 18, 28L, and 36 1					
MIRL Rwy 10L-28R and 18-36 1					
FAF to MAP 5.2 NM					
Knots	45	60	75	90	105
Min:Sec	6:56	5:12	4:10	3:28	2:58