

WAAS CH 42510 W10A	APP CRS 098°	Rwy Idg 3898 TDZE 906 Apt Elev 906
----------------------------------------	------------------------	---------------------------------------------------------------

RNAV (GPS) RWY 10L

FLYING CLOUD (FCM)

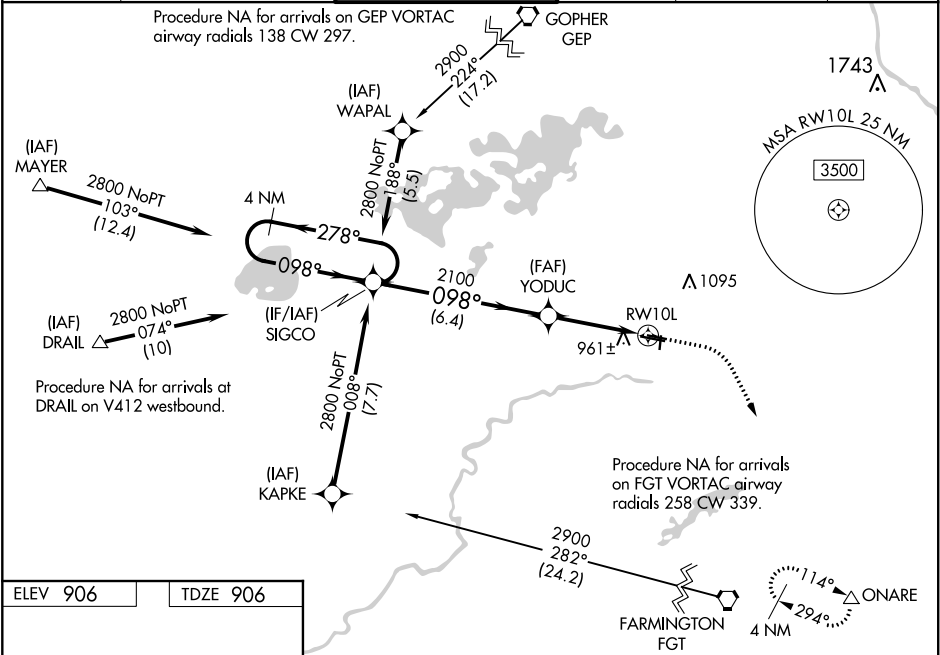
⚠

Baro-VNAV NA when using Minneapolis-St Paul Intl/Wold Chamberlain altimeter setting. For uncompensated Baro-VNAV systems, LNAV-VNAV NA below -22°C (-7°F) or above 54°C (130°F). DME/DME RNP-0.3 NA. Night Landing: Rwy 18/36 NA. When local altimeter setting not received, use Minneapolis-St Paul Intl/Wold Chamberlain altimeter setting and increase all DA 34 feet and all MDA 40 feet; increase LNAV/VNAV visibility ½ mile all Cats, and Circling Cat D ¼ mile.

MISSED APPROACH:

Climb to 1400 then climbing right turn to 2900 direct ONARE and hold.

ATIS 124.9	MINNEAPOLIS APP CON 134.7 284.7	FLYING CLOUD TOWER ★ 119.15 (CTAF)	GND CON 121.7	CLNC DEL 121.7 (When twr closed)	UNICOM 122.95
----------------------	-------------------------------------------	----------------------------------------------	-------------------------	-----------------------------------------------	-------------------------



ELEV 906

TDZE 906

098° to RW10L

959, 81, 28R, 28L, 939, 943, 36, 2690 X 75, 5000 X 100, 3898 X 75, TWR 988±, 36

HIRL Rwy 10R-28L

REIL Rwy 10L, 28R

REIL Rwy 18, 28L, and 36

MIRL Rwy 10L-28R and 18-36

4 NM Holding Pattern		SIGCO		YODUC		1400 ↑	2900 ↷	ONARE △
2800		← 278° 098° →		098°		2100		RW10L ↗
GP 3.00° TCH 39				2100				
		6.4 NM		3.6 NM				
CATEGORY		A	B	C	D			
LPV DA		1187-1 281 (300-1)						
LNAV/VNAV DA		1230-1 ½ 324 (400-1 ½)						
LNAV MDA		1240-1 334 (400-1)						
CIRCLING		1320-1 414 (500-1)	1440-1 534 (600-1)	1440-1 ½ 534 (600-1 ½)	1540-2 634 (700-2)			