

VORTAC GEP	APP CRS	Rwy Idg	N/A
117.3	166°	TDZE	N/A
Chan 120		Apt Elev	869

VOR or GPS-A

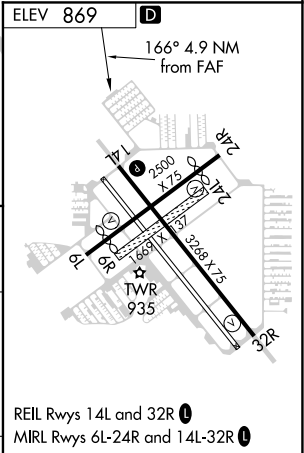
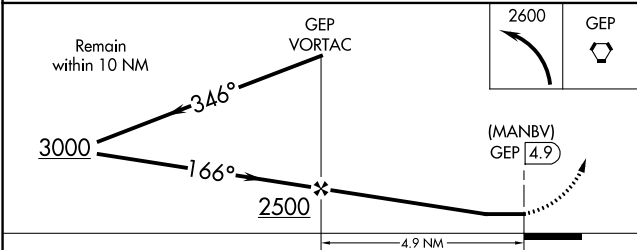
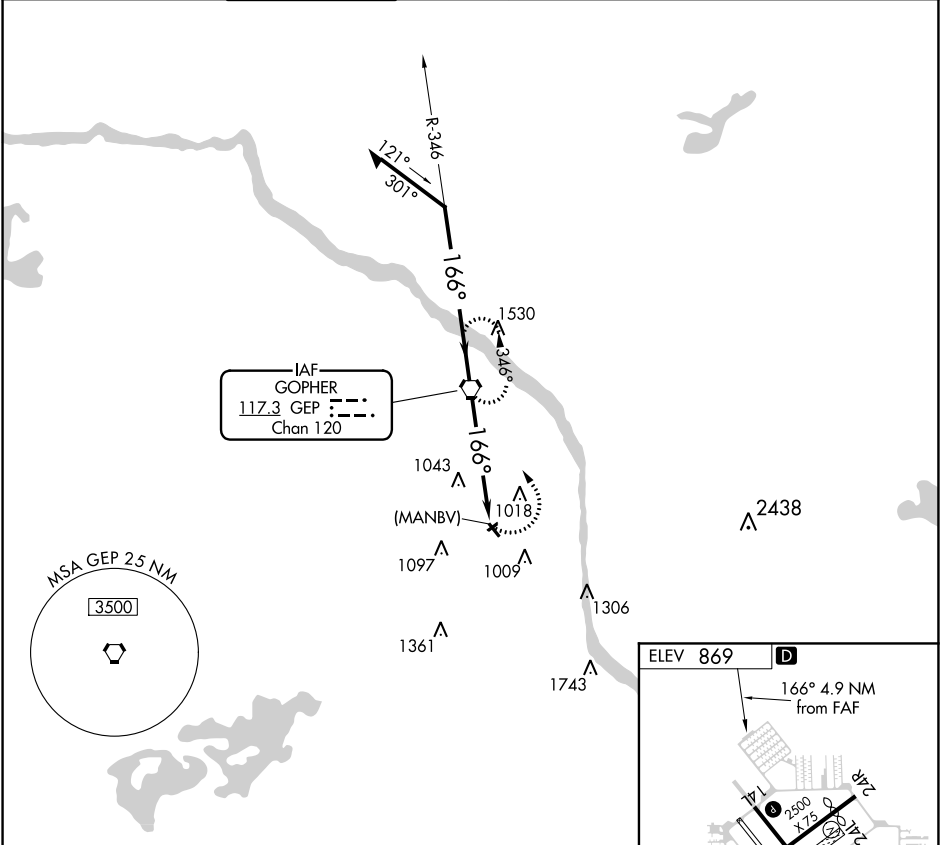
CRYSTAL (MIC)

▼

Circling NA to Rwy's 6R and 24L.
When local altimeter setting not received, use Anoka County-Blaine (Janes Field) altimeter setting and increase all MDA's 40 feet.

MISSED APPROACH: Climbing left turn to 2600 direct GEP VORTAC and hold.

ATIS	MINNEAPOLIS APP CON	CRYSTAL TOWER★	GND CON	CLNC DEL	MINNEAPOLIS CLNC DEL	UNICOM
124.475	126.5 335.65	120.7 (CTAF) 0	121.6	121.6	121.6 (When tower closed)	122.95



CATEGORY	A	B	C	D	FAF to MAP 4.9 NM					
CIRCLING	1360-1	491 (500-1)	1360-1½ 491 (500-1½)	1460-2 591 (600-2)	Knots	60	90	120	150	180
					Min:Sec	4:54	3:16	2:27	1:58	1:38