

LOC/DME I-BJI 109.35 Chan 30 (Y)	APP CRS 253°	Rwy ldg TDZE Apt Elev	5700 1389 1391
--	------------------------	-----------------------------	---

ILS or LOC RWY 25
BEMIDJI RGNL (BJI)

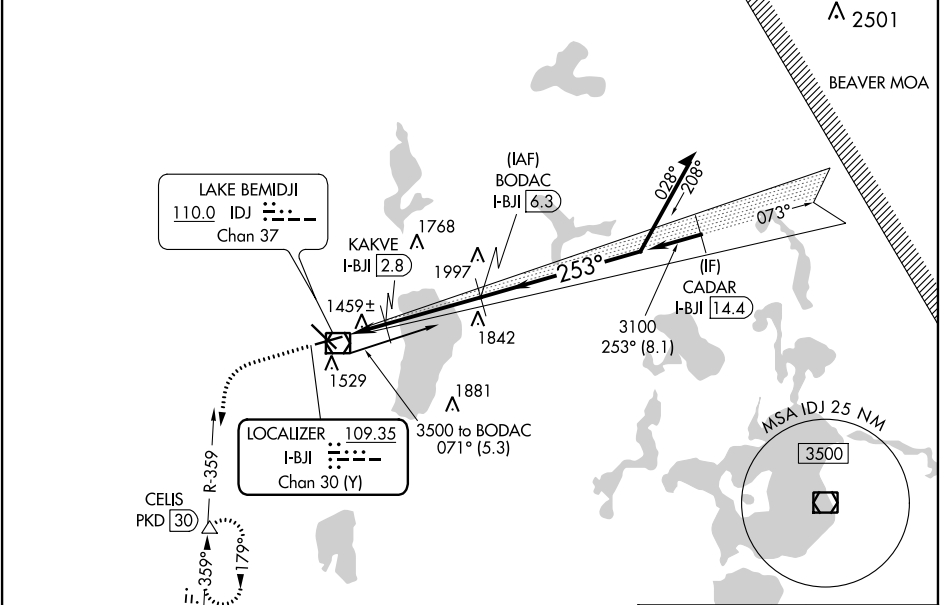
RADAR and DME required.

NA

Rwy 25 helicopter visibility reduction below ¾ SM not authorized.

MISSED APPROACH: Climb to 2300 then
climbing left turn to 3400 on PKD VOR/DME
R-359 to CELIS/PKD 30 DME and hold.

AWOS-3 119.275	MINNEAPOLIS CENTER 134.75 251.1	UNICOM 122.8 (CTAF) 0
--------------------------	---	--



2300

3400

PKD R-359

CELIS

*LOC only.

I-BJI 1.1

*I-BJI 2

KAKVE I-BJI 2.8

BODAC I-BJI 6.3

0.9

0.8

3.5 NM

1960

3100

3500

073°

253°

Remain within 10 NM

Use I-BJI DME when on the localizer course.

GS 3.00° TCH 47

CATEGORY	A	B	C	D
S-ILS 25	1589-¾ 200 (200-¾)			
S-LOC 25	1720-1 331 (400-1)			
CIRCLING	1840-1 449 (500-1)	1860-1 469 (500-1)	1860-1½ 469 (500-1½)	1960-2 569 (600-2)

ELEV 1391 D TDZE 1389

Detailed diagram of the runway and taxiway area. It shows the runway (7000 x 150) and taxiway (5700 x 150). Key altitudes include 1437±, 1441±, 1443, and 1437±. A 253° 5.2 NM from FAF is indicated. HIRL Rwy 13-31, MIRL Rwy 7-25, and REIL Rwy 7 and 25 are also shown.

NC-1, 03 DEC 2020 to 31 DEC 2020

NC-1, 03 DEC 2020 to 31 DEC 2020