

WAAS CH <b>82502</b> <b>W23A</b>	APP CRS <b>231°</b>	Rwy Idg <b>6512</b> TDZE <b>1224</b> Apt Elev <b>1232</b>
--	------------------------	---

RNAV (GPS) RWY 23  
BRainerd Lakes RGNL (BRD)

**V** For uncompensated Baro-VNAV systems, LNAV/VNAV NA below -17°C (2°F) or above 54°C (130°F). DME/DME RNP -0.3 NA. VDP and Baro-VNAV NA when using Aikini altimeter setting. When local altimeter setting not received, use Aikini altimeter setting and increase all DAs 52 feet and all MDAs 60 feet.

MALSR

**MISSED APPROACH:** Climb to 3300 direct TEYYU and on track 321° to CUCAC and hold.

ASOS <b>126.775</b>	MINNEAPOLIS CENTER <b>118.05 239.0</b>	UNICOM <b>122.7 (CTAF) 0</b>
------------------------	---	---------------------------------

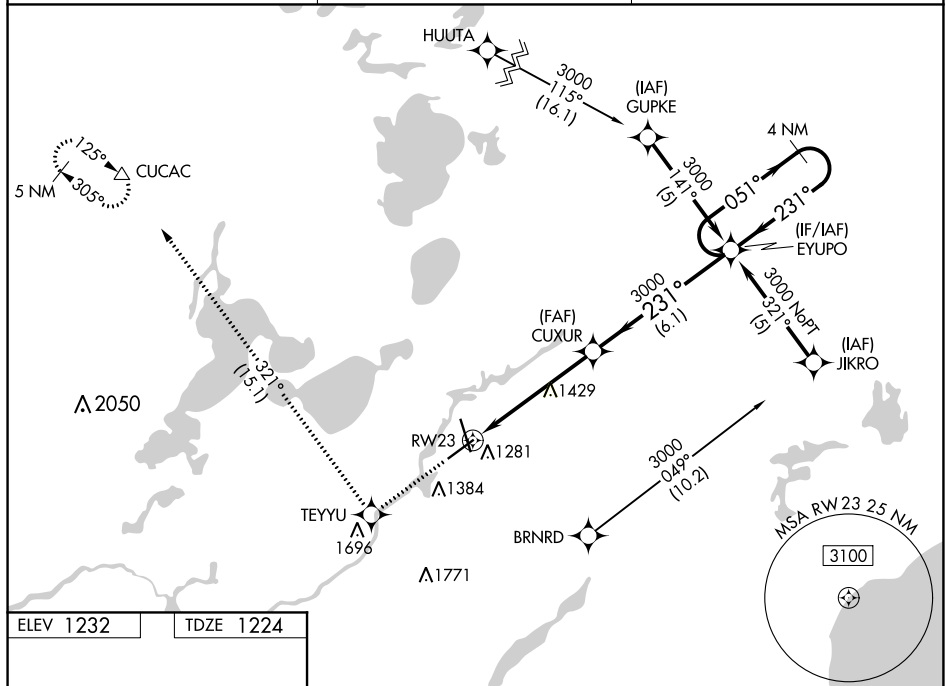


Diagram illustrating the HIRL (High Frequency Radio Location Line) and REIL (Radio Frequency Identification Line) systems. The HIRL is shown as a line with stations 1267 A, 5, 1300, 34, and 231° to RW23. The REIL is shown as a line with stations 91, 7100 X 130, 6512 X 150, and 1300. A star symbol is located near station 1300. A compass rose indicates the orientation.

<div style="display: flex; justify-content: space-around; align-items: center;"> <div style="text-align: center;">3300 ↑</div> <div style="text-align: center;">TEYU ✦</div> <div style="text-align: center;">tr 321° △</div> <div style="text-align: center;">CUCAC △</div> </div>		<div style="display: flex; justify-content: space-around; align-items: center;"> <div style="text-align: center;">CUXUR  </div> <div style="text-align: center;">EYUPO  </div> </div>		<div style="text-align: right;">4 NM Holding Pattern</div>	
<div style="display: flex; justify-content: space-between;"> <div> <p>*NNAV only</p> </div> <div> <p>*1.5 NM to RW23</p> </div> </div>		<div style="text-align: center;"> <p>231°</p> <p>3000</p> </div>		<div style="text-align: right;"> <p>051° →</p> <p>← 231°</p> <p>3000</p> <p>GP 3.00°</p> <p>TCH 50</p> </div>	
CATEGORY		A	B	C	D
LPV	DA	1501-1/2 277 (300-1/2)			
LNNAV/ VNAV	DA	1573-3/4 349 (400-3/4)			
LNNAV	MDA	1760-1/2	536 (600-1/2)	1760-1 536 (600-1)	1760-1 1/4 536 (600-1 1/4)
<b>C</b> CIRCLING		1760-1	528 (600-1)	1760-1 1/2 528 (600-1 1/2)	1860-2 628 (700-2)