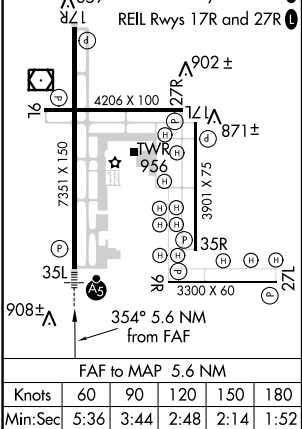
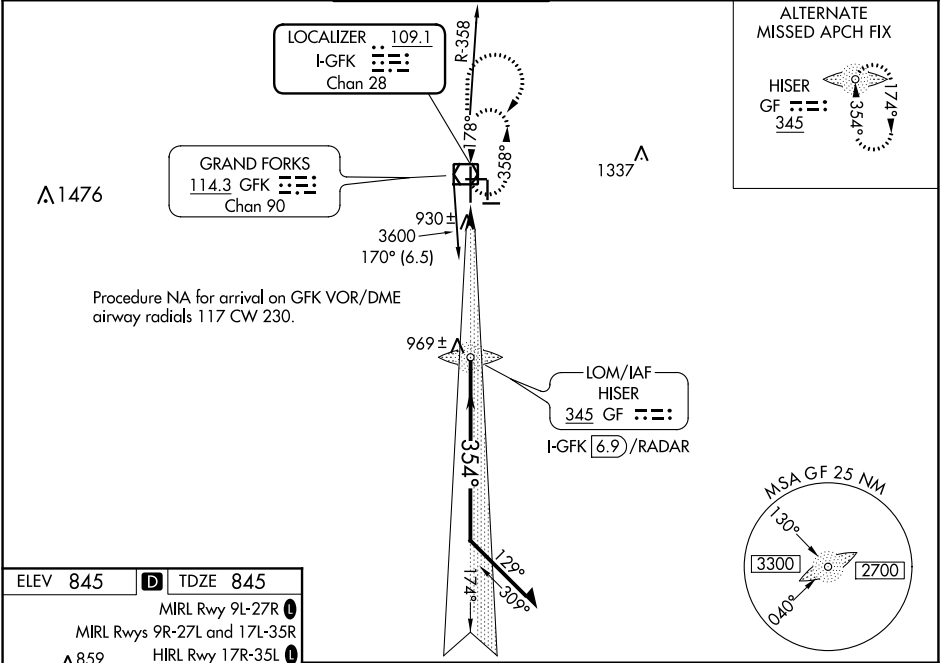


LOC/DME I-GFK	APP CRS	Rwy Idg	7351
109.1	354°	TDZE	845
Chan 28		Apt Elev	845

ILS or LOC RWY 35L

GRAND FORKS INTL (GFK)

ADF or DME or RADAR REQUIRED.				MALSR A5		MISSED APPROACH: Climb to 3600 then right turn direct GFK VOR/DME and hold.
VDP NA with Crookston altimeter setting. When local altimeter setting not received, use Crookston altimeter setting and increase DA to 1107 feet and all MDA 80 feet; increase S-LOC 35L Cats C/D/E visibility to RVR 4000 and Circling Cats C and E visibility ¼ SM. For inop ALS, increase S-ILS 35L Cat E visibility to RVR 4000 and S-LOC 35L Cat E visibility to RVR 5000. For inop ALS when using Crookston altimeter setting, increase S-ILS 35L all Cats visibility to RVR 4500 and S-LOC 35L Cat C/D/E visibility to RVR 6000. Procedure turn NA for Cat E aircraft, Radar required.						
ATIS 119.4	GRAND FORKS APP CON 118.1 318.1	GRAND FORKS TOWER 118.4 (CTAF) 350.35	GND CON 124.575	CLNC DEL 135.725	UNICOM 122.95	



ELEV 845 D TDZE 845		MIRL Rwy 9L-27R	
		MIRL Rwy 9R-27L and 17L-35R	
		HIRL Rwy 17R-35L	
		REIL Rwy 17R and 27R	
		3600	
		GFK	
		GF	
		HISER LOM	
		I-GFK 6.9/RADAR	
		Remain within 10 NM	
		* LOC only.	
		* I-GFK 2.3	
		I-GFK 1.4	
		2536	
		174°	
		354°	
		2600	
		GS 2.76°	
		TCH 61	
		0.9 NM	
		4.6 NM	
		CATEGORY	
		A	
		B	
		C	
		D	
		E	
		S-ILS 35L	
		1045/24 200 (200-½)	
		S-LOC 35L	
		1180/24 335 (400-½)	
		1180/26 335 (400-½)	
		CIRCLING	
		1260-1 415 (500-1)	
		1300-1 455 (500-1)	
		1400-1½ 555 (600-1½)	
		1400-2 555 (600-2)	
		1520-2½ 675 (700-2½)	