

WAAS CH <b>63199</b> <b>W17A</b>	APP CRS <b>174°</b>	Rwy Idg TDZE <b>843</b> Apt Elev <b>845</b>	<b>7351</b> <b>843</b> <b>845</b>
--	------------------------	---	---

RNAV (GPS) RWY 17R

GRAND FORKS INTL (GFK)

RNP APCH.

▼

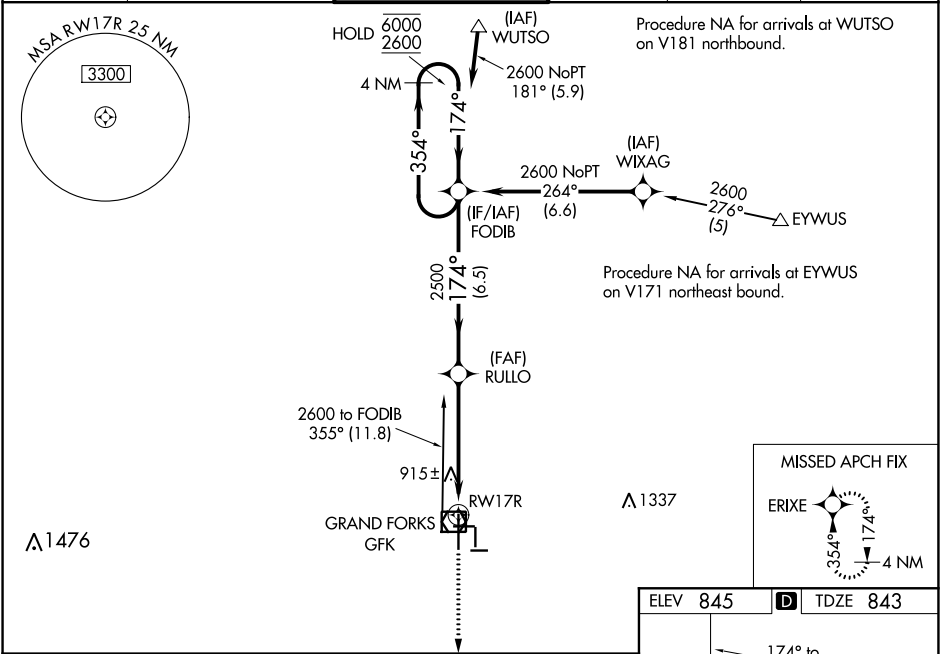
Baro-VNAV NA when using Crookston altimeter setting. For uncompensated Baro-VNAV systems, LNAV/VNAV NA below -20°C or above 54°C. VDP NA with Crookston altimeter setting.

⚠

When local altimeter setting not received, use Crookston altimeter setting and increase all DA 62 feet and all MDA 80 feet and increase LPV and LNAV/VNAV all Cats visibility  $\frac{1}{8}$  SM, LNAV Cats C/D visibility  $\frac{1}{8}$  SM, and Circling Cat C visibility  $\frac{1}{4}$  SM.

MISSED APPROACH:  
Climb to 2600 direct ERIXE and hold.

ATIS <b>119.4</b>	GRAND FORKS APP CON★ <b>118.1 318.1</b>	GRAND FORKS TOWER★ <b>118.4(CTAF) 0 350.35</b>	GND CON <b>124.575</b>	CLNC DEL <b>135.725</b>	UNICOM <b>122.95</b>
----------------------	--	---	---------------------------	----------------------------	-------------------------



2600

ERIXE

RULLO

2500

174°

354°

6000

2600

GP 3.00°

TCH 53

\*LNAV only

0.9 NM to RWY 17R

0.9

4.1 NM

6.5 NM

CATEGORY	A	B	C	D
LPV DA	1043- $\frac{3}{4}$ 200 (200- $\frac{3}{4}$ )			
LNAV/VNAV DA	1093- $\frac{3}{4}$ 250 (300- $\frac{3}{4}$ )			
LNAV MDA	1180-1 337 (400-1)			
CIRCLING	1260-1 415 (500-1)	1300-1 455 (500-1)	1400-1 $\frac{1}{2}$ 555 (600-1 $\frac{1}{2}$ )	1400-2 555 (600-2)

