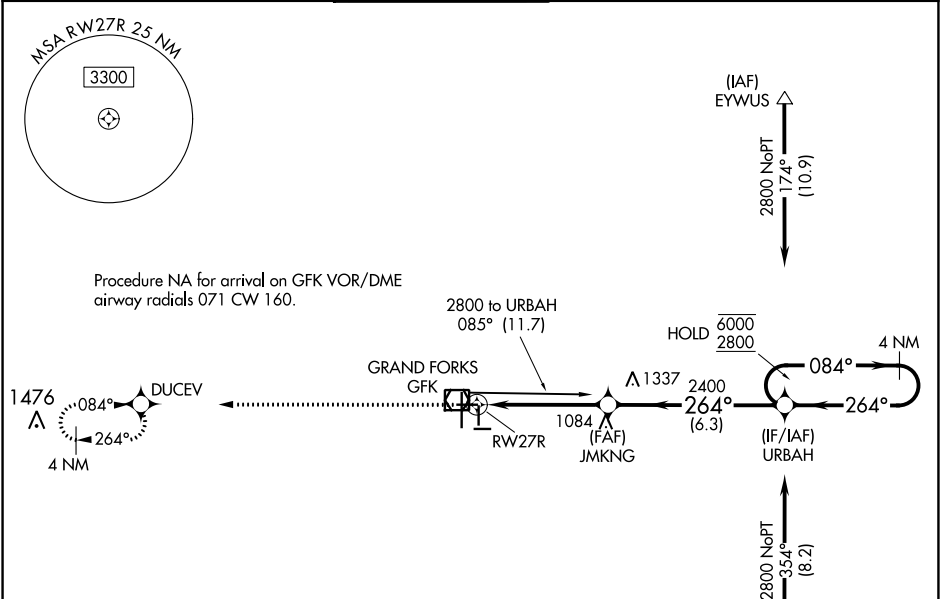


WAAS CH <b>78104</b> <b>W27A</b>	APP CRS <b>264°</b>	Rwy Idg TDZE <b>843</b> Apt Elev <b>845</b>	<b>4206</b> <b>843</b> <b>845</b>	<b>RNAV (GPS) RWY 27R</b> GRAND FORKS INTL (GFK)
--	------------------------	---	---	---

RNP APCH.	<div>VDP NA when using Crookston altimeter setting. When local altimeter setting not received, use Crookston altimeter setting and increase all DA 62 feet and all MDA 80 feet. Increase LNAV and Circling Cat C and D visibility ½ SM.</div>	MISSED APPROACH: Climb to 4000 direct DUCEV and hold, continue climb-in-hold to 4000.
-----------	---	---

ATIS <b>119.4</b>	GRAND FORKS APP CON ★ <b>118.1 318.1</b>	GRAND FORKS TOWER★ <b>118.4(CTAF) 350.35</b>	GND CON <b>124.575</b>	CLNC DEL <b>135.725</b>	UNICOM <b>122.95</b>
----------------------	---	---	---------------------------	----------------------------	-------------------------



ELEV 845	TDZE 843				
4000 DUCEV					
*LNAV only					
*1.8 NM to RW27R					
RW27R					
2400					
264°					
URBAH					
4 NM Holding Pattern					
084° 6000 2800					
264°					
GP 3.00° TCH 48					
CATEGORY	A	B	C	D	
LPV DA	1093-1 250 (300-1)				
LNAV MDA	1460-1	617 (700-1)	1460-1¾ 617 (700-1¾)	1460-2	617 (700-2)
CIRCLING	1460-1	615 (700-1)	1460-1¾ 615 (700-1¾)	1460-2	615 (700-2)