

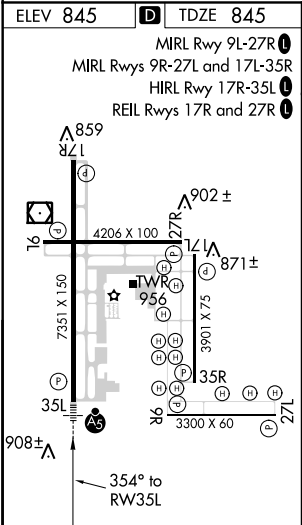
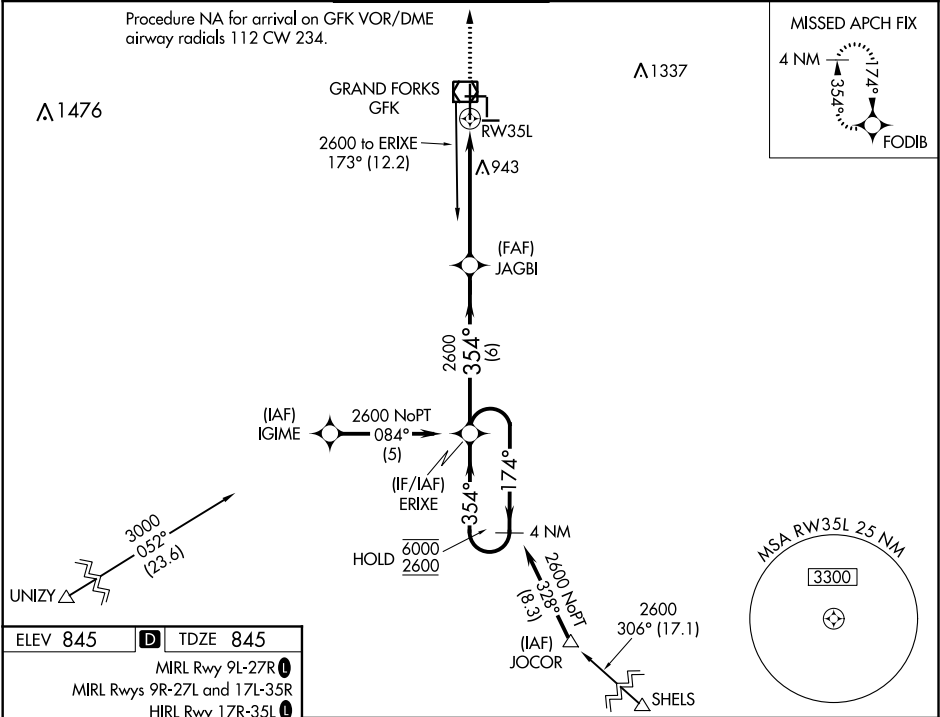
WAAS CH 70313 W35A	APP CRS 354°	Rwy Idg TDZE 845 Apt Elev 845	7351 845 845
--	------------------------	---	---

RNAV (GPS) RWY 35L

GRAND FORKS INTL (GFK)

RNP APCH.	MALSR	MISSED APPROACH: Climb to 2600 direct FODIB and hold.
▼ For uncompensated Baro-VNAV systems, LNAV/VNAV NA below -16°C or above 54°C. For Inop ALS, increase LNAV/VNAV Cat D visibility to RVR 5000 and LNAV Cat C/D visibility to RVR 5500.		

ATIS 119.4	GRAND FORKS APP CON ★ 118.1 318.1	GRAND FORKS TOWER★ 118.4 (CTAF) 350.35	GND CON 124.575	CLNC DEL 135.725	UNICOM 122.95
----------------------	---	--	---------------------------	----------------------------	-------------------------



VGSI and RNAV glidepath not coincident (VGSI Angle 2.76/TCH 61).

4 NM Holding Pattern

ERIXE

JAGBI

6000

2600

174°

354°

354°

2600

GP 3.00°

TCH 55

6 NM

4.3 NM

1 NM

*1 NM to RW35L

*LNAV only

RW35L

CATEGORY	A	B	C	D
LPV DA	1095/24 250 (300-½)			
LNAV/VNAV DA	1174/26 329 (400-½)			1174/40 329 (400-¾)
LNAV MDA	1200/24	355 (400-½)	1200/30 355 (400-¾)	1200/50 355 (400-1)
CIRCLING	1280-1 435 (500-1)	1300-1 455 (500-1)	1400-1½ 555 (600-1½)	1400-2 555 (600-2)

NC-1, 03 DEC 2020 to 31 DEC 2020

NC-1, 03 DEC 2020 to 31 DEC 2020