

VOR/DME GFK	APP CRS	Rwy Idg	7351
114.3	344°	TDZE	845
Chan 90		Apt Elev	845

VOR RWY 35L

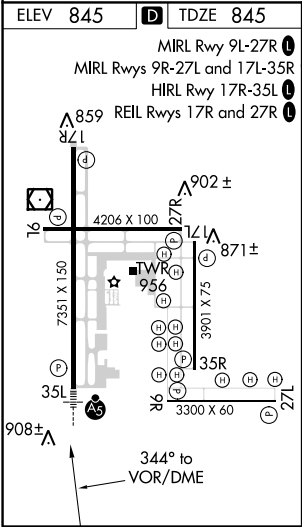
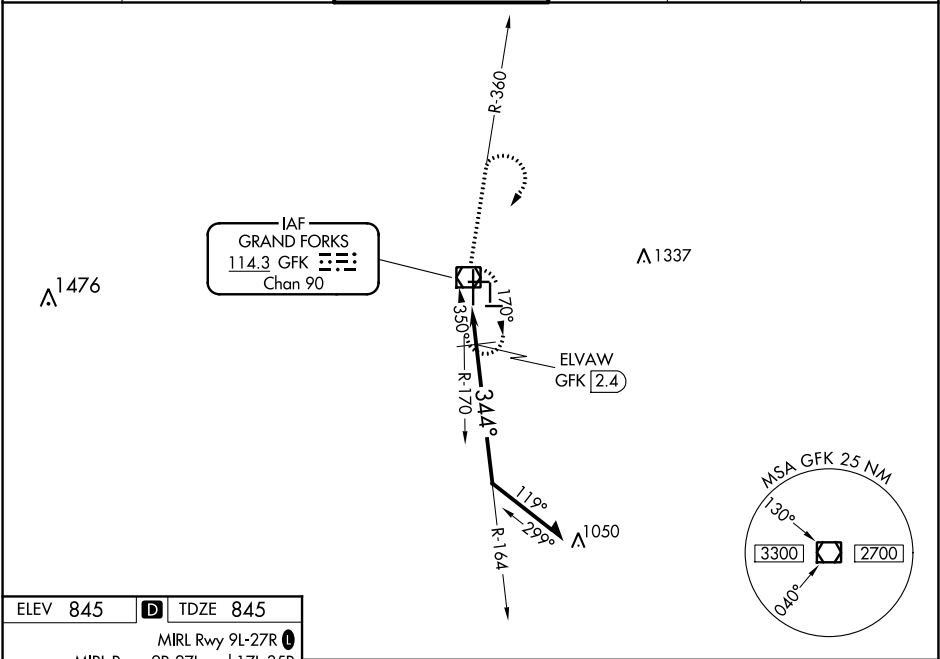
GRAND FORKS INTL (GFK)

When local altimeter setting not received, use Crookston altimeter setting and increase all MDA 80 feet; increase Cat C/D visibility to 1½ SM and Circling Cat C visibility ¼ SM. Increase ELVAW fix minimums Cat C/D visibility to RVR 4500 and Circling Cat C visibility ¼ SM. For inop ALS, increase S-35L Cat C/D visibility to 1¾ SM. ELVAW fix minimums: For inop ALS, increase S-35L Cat C/D visibility to RVR 5500.

MALSR

MISSED APPROACH: Climb to 1300 then climb to 3600 on GFK R-360 then right turn direct GFK VOR/DME and hold.

ATIS 119.4	GRAND FORKS APP CON ★ 118.1 318.1	GRAND FORKS TOWER★ 118.4(CTAF) 350.35	GND CON 124.575	CLNC DEL 135.725	UNICOM 122.95
---------------	--------------------------------------	--	--------------------	---------------------	------------------



1300	3600	GFK	GFK VOR/DME	Remain within 10 NM
GFK R-360				
VGSI and descent angles not coincident (VGSI Angle 2.76/TCH 61).				
*1440 when using Crookston altimeter setting.				
CATEGORY	A	B	C	D
S-35L	1360/24	515 (600-½)	1360/55	515 (600-1)
CIRCLING	1360-1	515 (600-1)	1400-1½	1400-2
			555 (600-1½)	555 (600-2)
ELVAW FIX MINIMUMS				
S-35L	1220/24	375 (400-½)	1220/40	375 (400-¾)
CIRCLING	1260-1	1300-1	1400-1½	1400-2
	415 (500-1)	455 (500-1)	555 (600-1½)	555 (600-2)