

LOC I-HYZ <b><u>110.5</u></b>	APP CRS <b>313°</b>	Rwy Idg TDZE Apt Elev	<b>6304</b> <b>1114</b> <b>1119</b>
----------------------------------	------------------------	-----------------------------	---

ILS or LOC RWY 31  
THIEF RIVER FALLS RGNL (TVF)

DME required for procedure entry. DME required.

MALSR

**MISSED APPROACH:** Climb to 2700 then left turn direct TVF VOR/DME and hold.

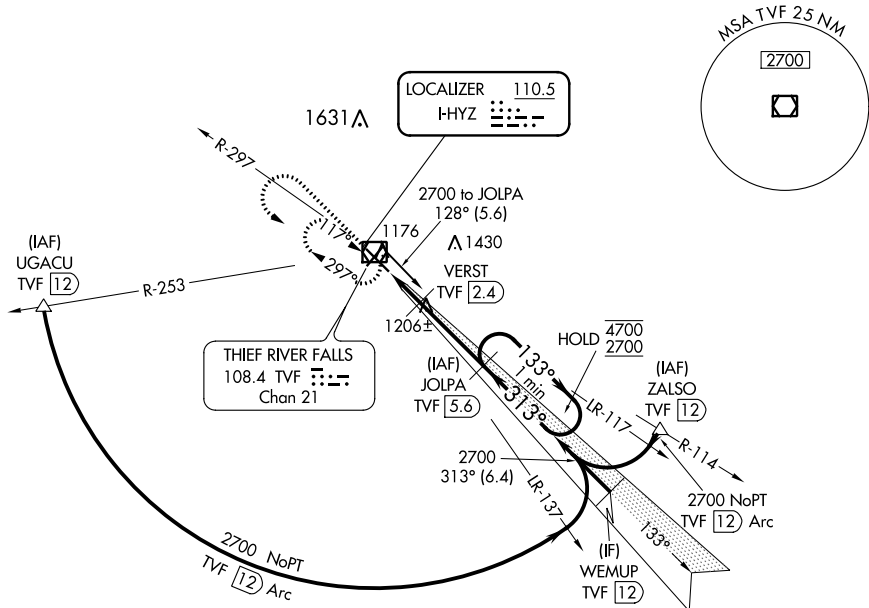
**T** For inop ALS, increase S-LOC 31 Cat C/D visibility to 1 SM.

**A** DME from TVF VOR/DME. Simultaneous reception of I-HYZ and TVF DME required.

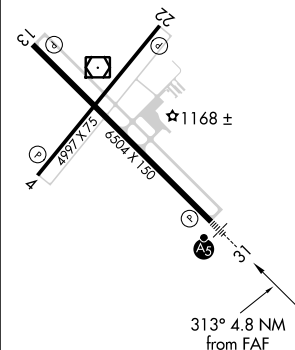
AWOS-3PT  
119.025

MINNEAPOLIS CENTER  
132.15 269.6

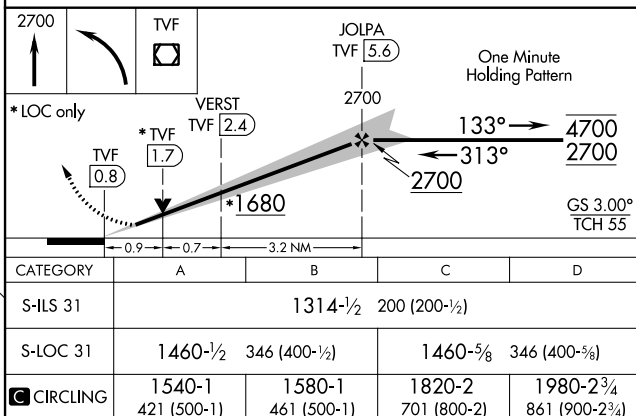
UNICOM  
122.8 (CTAF) **L**



ELEV 1119	<b>D</b>	TDZE 1114
-----------	----------	-----------

HIRL Rwy 13-31 **L**

MIRL Rwy 4-22 L

REIL Rwyys 4, 13 and 22 **L**

THIEF RIVER FALLS, MINNESOTA

Amdt 5A 25APR19

48°04'N-96°11'W

THIEF RIVER FALLS RGNL (TVF)  
ILS or LOC RWY 31

NC-1, 03 DEC 2020 to 31 DEC 2020