

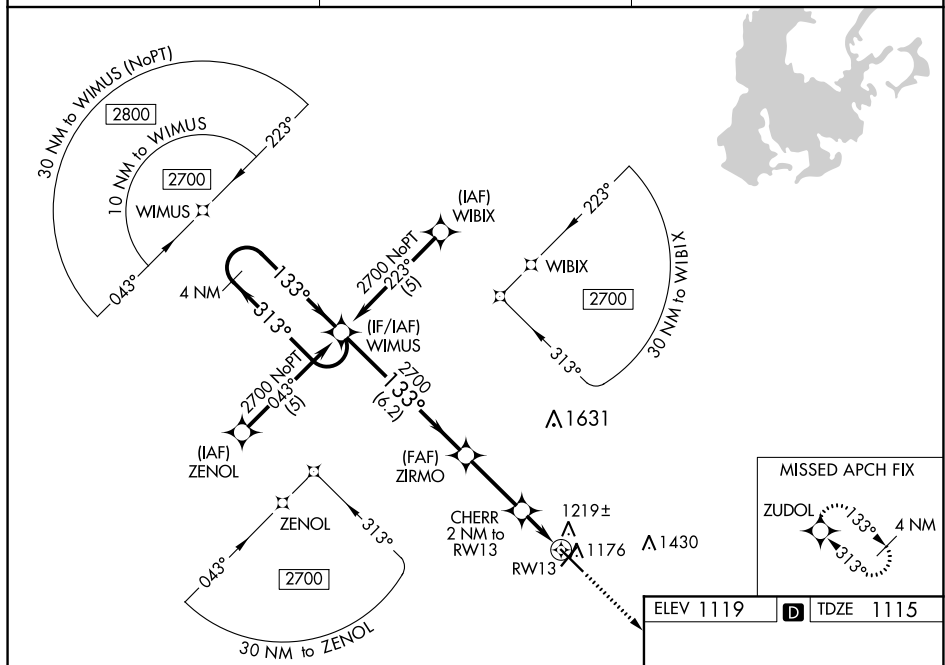
WAAS CH 72711 W13A	APP CRS 133°	Rwy Idg 6504 TDZE 1115 Apt Elev 1119
--	------------------------	---

RNAV (GPS) RWY 13

- T** Baro-VNAV and VDP NA when using Crockston altimeter setting. For uncompensated Baro-VNAV systems, LNAV/VNAV NA below -17°C (2°F) or above 54°C (130°F). DME/DME RNP-0.3 NA.
- A** When local altimeter setting not received, use Crockston altimeter setting: increase LPV DA to 1447 feet and all visibilities $\frac{1}{8}$ SM; increase LNAV/VNAV DA to 1518 feet and all visibilities $\frac{1}{4}$ SM; increase all MDAs 100 feet and visibility Cats C and D $\frac{3}{8}$ SM.

MISSED APPROACH:
Climb to 2700 direct
ZUDOL and hold.

AWOS-3PT 119.025	MINNEAPOLIS CENTER 132.15 269.6	UNICOM 122.8 (CTAF) 0
----------------------------	---	---------------------------------



CATEGORY	A	B	C	D
LPV DA	1365-1 250 (300-1)			
LNAV/VNAV DA	1436-1 ¼ 321 (400-1 ¼)			
LNAV MDA	1480-1 365 (400-1)			1480-1 ¼ 365 (400-1 ¼)
CIRCLING	1540-1 421 (500-1)	1580-1 461 (500-1)	1820-2 701 (800-2)	1980-2 ¾ 861 (900-2 ¾)

Diagram of the RW13 holding pattern showing the 133° heading and the 1 NM radius. The diagram also shows the 133° to RW13 and the 133° to RW13.