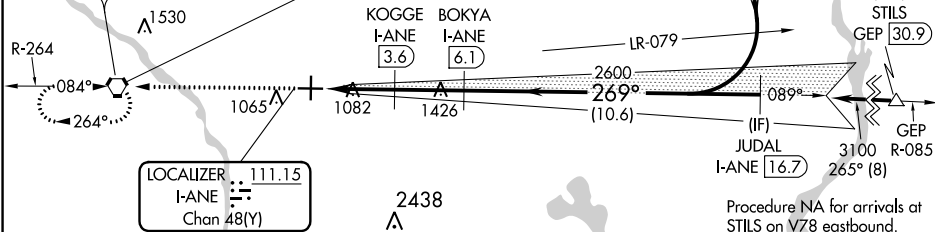
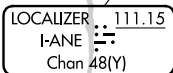
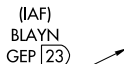


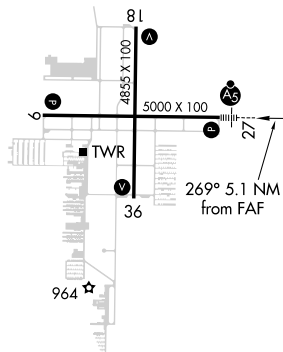
ILS or LOC RWY 27  
ANOKA COUNTY-BLAINE (JANES FIELD) (ANE)

### ALTERNATE MISSED APCH FIX



Procedure NA for arrivals at  
STILS on V78 eastbound.

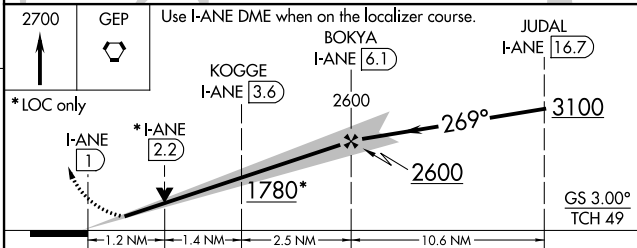
ELEV 912		TDZE 910
----------	--	----------



HIRL Rwy 9-27 **L**  
MIRL Rwy 18-36 **L**  
REIL Rwys 9, 18, and 36 **L**



## DME REQUIRED



CATEGORY	A	B	C	D
S-ILS 27	1110-½ 200 (200-½)			
S-LOC 27	1340-½ 430 (500-½)		1340-¾ 430 (500-¾)	1340-1 430 (500-1)
<b>C</b> CIRCLING	1400-1 488 (500-1)		1460-1½ 548 (600-1½)	1580-2 668 (700-2)