

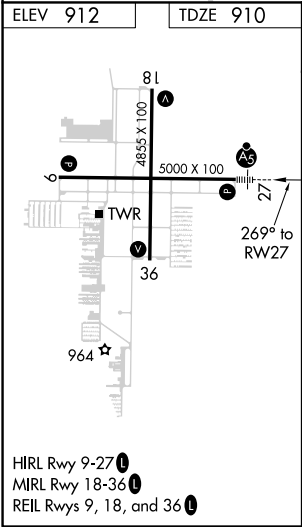
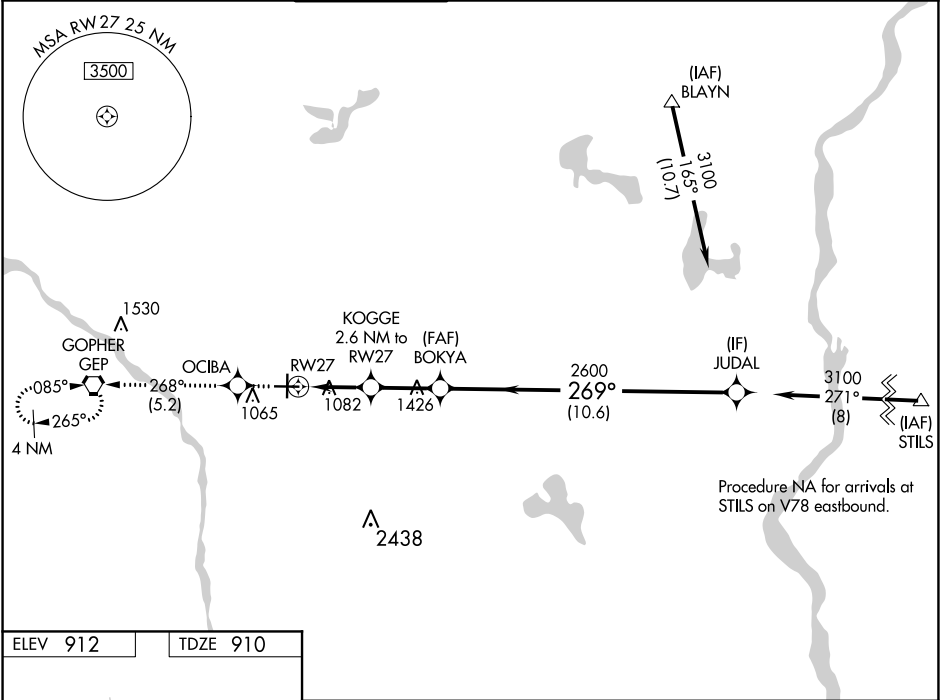


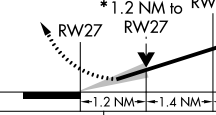

WAAS CH 78300 W27A	APP CRS 269°	Rwy Idg 5000 TDZE 910 Apt Elev 912
--	------------------------	---

RNAV (GPS) RWY 27

ANOKA COUNTY-BLAINE (JANES FIELD) (A.N.E.)

RNP APCH. ▼ For uncompensated Baro-VNAV systems, LNAV/VNAV NA below -16°C or above 54°C. For inop ALS, increase LNAV/VNAV all Cats visibility to 1½ SM.				MALSR 	MISSED APPROACH: Climb to 2700 direct OCIBA and track 268° to GEP VORTAC and hold.	
ATIS 120.625	MINNEAPOLIS APP CON 126.5 335.65	ANOKA TOWER★ 132.4 (CTAF) 	GND CON 121.85	CLNC DEL 121.3	MINNEAPOLIS CLNC DEL 121.85 (When tower closed)	UNICOM 122.95



2700 ↑	OCIBA ✦	tr 268° ⬢			
*LNAV only.			KOGGE 2.6 NM to RW27	BOKYA 2600	JUDAL 3100
			GP 3.00° TCH 49°		
1.2 NM			1.4 NM	2.5 NM	10.6 NM
CATEGORY	A		B	C	D
LPV DA	1160-½ 250 (300-½)				
LNAV/VNAV DA	1371-1 461 (500-1)				
LNAV MDA	1340-½ 430 (500-½)		1340-¾ 430 (500-¾)		1340-1 430 (500-1)
 CIRCLING	1400-1 488 (500-1)		1460-1½ 548 (600-1½)		1580-2 668 (700-2)

NC-1, 03 DEC 2020 to 31 DEC 2020

NC-1, 03 DEC 2020 to 31 DEC 2020