

WAAS CH 58230 W11A	APP CRS 113°	Rwy Idg TDZE 1574 Apt Elev 1574
--	------------------------	---

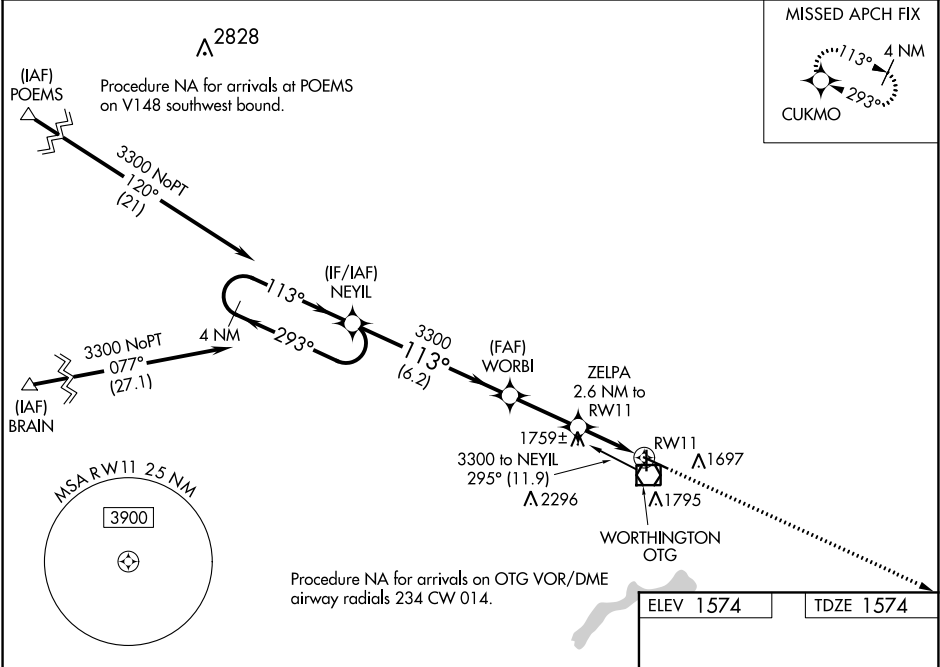
RNAV (GPS) RWY 11

WORTHINGTON MUNI (OTG)

⚠ Baro-VNAV NA when using Jackson altimeter setting. For uncompensated Baro-VNAV systems, LNAV/VNAV NA below -18°C (0°F) or above 54°C (130°F). When VGSi inop, Straight-in/Circling Rwy 11 procedure NA at night. DME/DME RNP-0.3 NA. Visibility reduction by helicopters NA. When local altimeter setting not received, use Jackson altimeter setting and increase all DA 78 feet, all MDA 80 feet, increase LPV and LNAV/VNAV all Cats and LNAV Cats C/D visibility ⅓ mile and Circling Cat C visibility ¼ mile.

MISSED APPROACH: Climb to 3300 direct CUKMO and hold.

AWOS-3PT 121.075	MINNEAPOLIS CENTER 132.05 317.4	UNICOM 122.8 (CTAF)
----------------------------	---	-------------------------------



4 NM Holding Pattern		NEYL	WORBI	3300	CUKMO
3300 ← 293°		113° →	3300	3300	
GP 3.00°					
TCH 42					
		6.2 NM	2.7 NM	2.6 NM	
CATEGORY	A	B	C	D	
LPV DA	1824-1		250 (300-1)		
LNAV/VNAV DA	1826-1		252 (300-1)		
LNAV MDA	2020-1	446 (500-1)	2020-1⅔	446 (500-1⅔)	
CIRCLING	2100-1	526 (600-1)	2100-1½	2140-2	566 (600-2)

