

WAAS CH 45930 W29A	APP CRS 293°	Rwy Idg 5500 TDZE 1570 Apt Elev 1574
--	------------------------	---

RNAV (GPS) RWY 29
WORTHINGTON MUNI (OTG)

T Baro-VNAV NA when using Jackson altimeter setting. For uncompensated Baro-VNAV systems, LNAV/VNAV NA below -18°C (0°F) or above 54°C (130°F). DME/DME RNP-0.3 NA. VDP NA with Jackson altimeter setting. When local altimeter setting not received, use Jackson altimeter setting and increase all DA 78 feet and all MDA 80 feet: increase LNAV/VNAV all Cats visibility $\frac{1}{4}$ mile, LNAV Cats C/D visibility $\frac{3}{8}$ mile, and Circling Cat C visibility $\frac{1}{4}$ mile. For inoperative MALSR, when using Jackson altimeter setting, increase LPV all Cats visibility to $\frac{3}{8}$ mile.

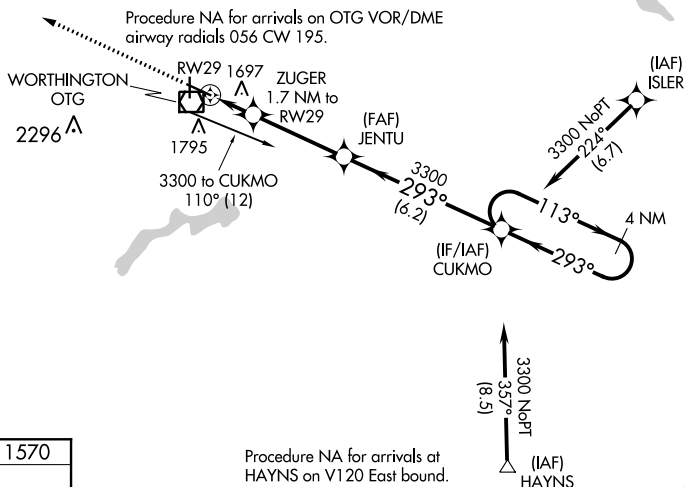

MALSR



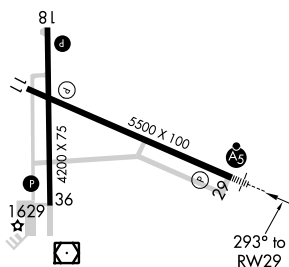
MISSED APPROACH:
Climb to 3300 direct
NEYIL and hold.

AWOS-3PT
121.075

MINNEAPOLIS CENTER
132.05 317.4

UNICOM
122.8 (CTAF) 

ELEV 1574		TDZE 1570
-----------	--	-----------



MIRL Rwy 18-36 **L**
HIRL Rwy 11-29 **L**
REIL Rws 11, 18, and 36 **L**

[illegible]