

CAMP RIPLEY, MINNESOTA

# ILS or LOC RWY 31

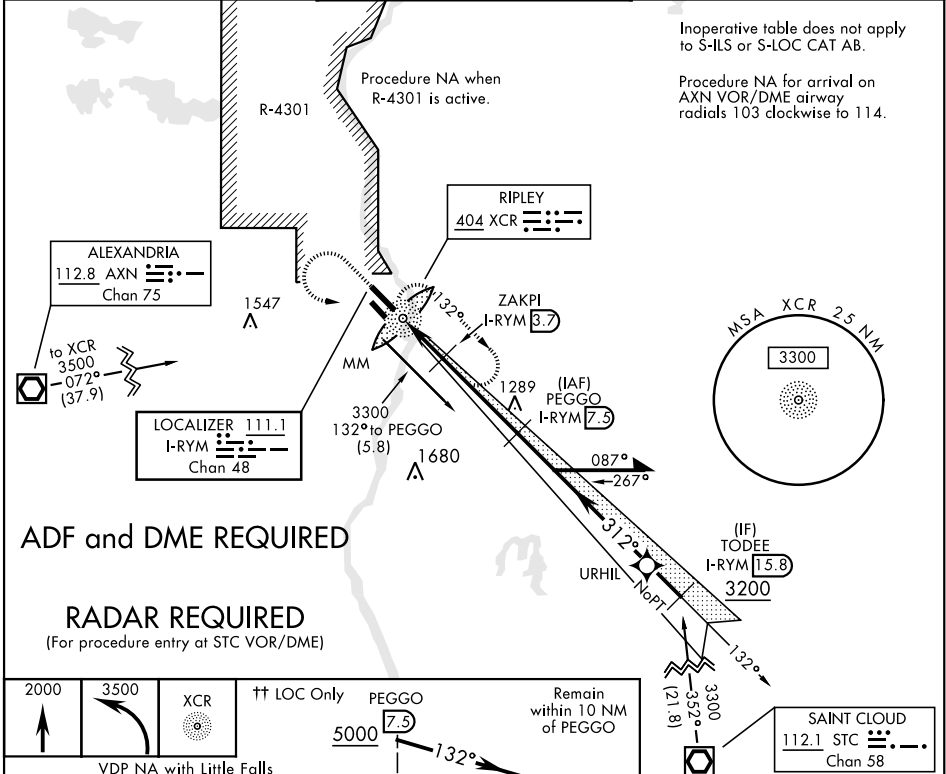
|   |                         |  |
|---|-------------------------|--|
| LOC I-RYM<br><b>111.1</b><br>Chan <b>48</b> | APCH CRS<br><b>312°</b> | Rwy Idg<br>TDZE <b>1146</b><br>Arpt Elev <b>1150</b> |
|---|-------------------------|--|

AL-5226 [USA]

RAY S. MILLER AAF (KRYM)

|  |                                      |  |
|--|--------------------------------------|--|
| <p><b>V</b> When local altimeter setting not received, use Little Falls altimeter setting.</p> <p><b>A</b></p> | <p><b>MALSF</b></p> <p><b>A4</b></p> | <p><b>MISSED APPROACH:</b> Climb to 2000, then climbing left turn to 3500 direct XCR NDB and hold. Continue climb in hold to 3500.</p> |
|--|--------------------------------------|--|

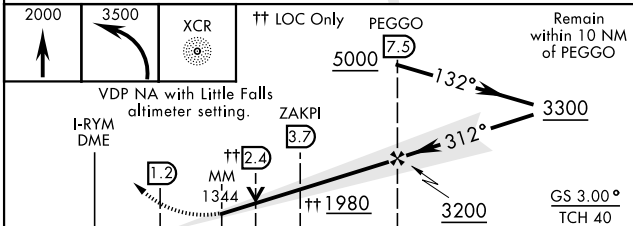
|   |   |                          |
|---|---|--------------------------|
| MINNEAPOLIS CENTER<br><b>118.05 239.0</b> | MILLER TOWER ★<br><b>126.2 0 254.4 46.7</b> | CLNC DEL<br><b>126.2</b> |
|---|---|--------------------------|



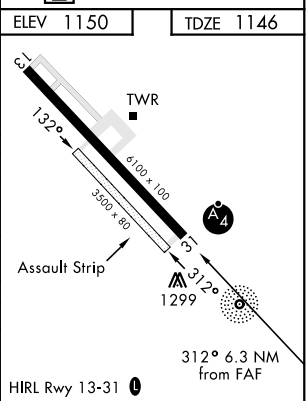
ADF and DME REQUIRED

**RADAR REQUIRED**

(For procedure entry at STC VOR/DME)



| CATEGORY                                | A                     | B                     | C                       | D                      |
|---|-----------------------|-----------------------|-------------------------|------------------------|
| S-ILS 31                                | 1346-1                | 200                   | (200-1)                 |                        |
| S-LOC 31                                | 1580-1                | 434                   | (500-1)                 |                        |
| <b>C</b> CIRCLING                       | 1640-1<br>490 (500-1) | 1660-1<br>510 (600-1) | 1720-1½<br>570 (600-1½) | 2080-3<br>930 (1000-3) |
| LITTLE FALLS ALTIMETER SETTING MINIMUMS |                       |                       |                         |                        |
| S-ILS 31                                | 1370-1                | 224                   | (300-1)                 |                        |
| S-LOC 31                                | 1620-1                | 474                   | (500-1)                 | 1620-1½ 474 (500-1½)   |
| <b>C</b> CIRCLING                       | 1680-1<br>530 (600-1) | 1700-1<br>550 (600-1) | 1760-1¾<br>610 (700-1¾) | 2120-3<br>970 (1000-3) |



CAMP RIPLEY, MINNESOTA

46°05'N-94°21'W

RAY S. MILLER AAF (KRYM)

Amtd 6A 07NOV19

# ILS or LOC RWY 31

NC-1, 03 DEC 2020 to 31 DEC 2020

NC-1, 03 DEC 2020 to 31 DEC 2020