

WAAS CH <b>77900</b> <b>W13A</b>	APP CRS <b>130°</b>	Rwy Idg TDZE <b>1301</b> Apt Elev <b>1304</b>
--	------------------------	---

RNAV (GPS) RWY 13

MITCHELL MUNI (MHE)

⚠

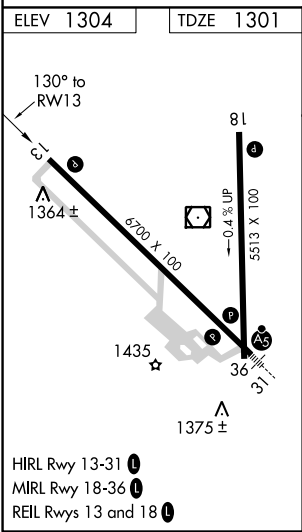
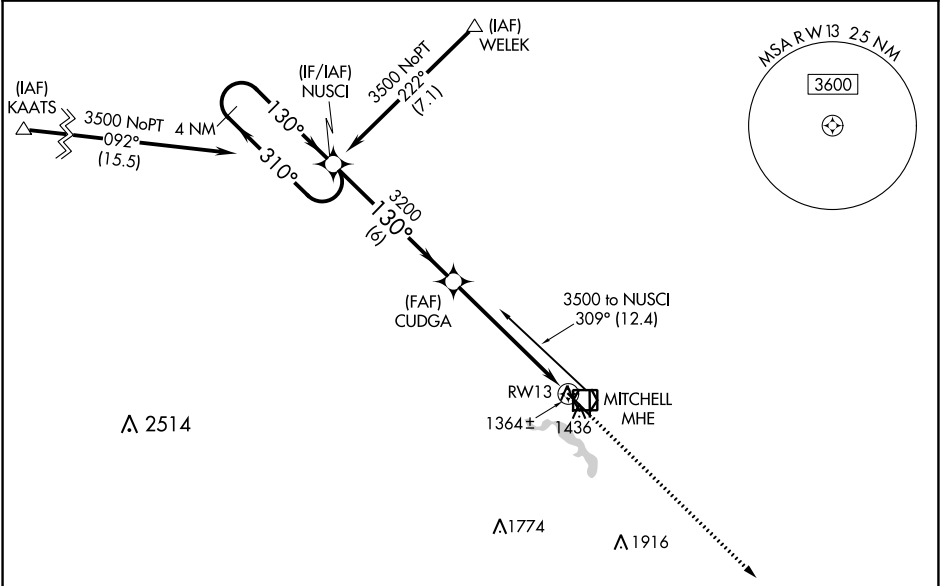
For uncompensated Baro-VNAV systems, LNAV/VNAV NA below -16°C (4°F) or above 54°C (130°F). Baro-VNAV and VDP NA with Huron Rgnl altimeter setting.

⚠

DME/DME RNP-0.3 NA. When local altimeter setting not received, use Huron Rgnl altimeter setting and increase all DA 89 feet and all MDA 100 feet. Increase LPV all Cats visibility ¼ mile, LNAV/VNAV all Cats and LNAV Cats C/D visibility ⅓ mile and Circling Cat C visibility ¼ mile.

MISSED APPROACH: Climb to 3200 direct JUTUB and hold.

ASOS <b>124.175</b>	MINNEAPOLIS CENTER <b>126.25 339.8</b>	UNICOM <b>122.8 (CTAF) 0</b>
------------------------	---	---------------------------------



4 NM Holding Pattern				
NUSCI				
3500 ← 310° → 130° → 3200				
GP 3.00° TCH 46				
CUDGA				
3200				
*0.9 NM to RWY 13 *LNAV only				
6 NM 4.8 NM 0.9				
CATEGORY	A	B	C	D
LPV DA	1575-1 274 (300-1)			
LNAV/VNAV DA	1627-1¼ 326 (400-1¼)			
LNAV MDA	1620-1 319 (400-1)			
CIRCLING	1740-1¼ 436 (500-1¼)	1760-1¼ 456 (500-1¼)	1820-1½ 516 (600-1½)	1860-2 556 (600-2)

NC-1, 03 DEC 2020 to 31 DEC 2020

NC-1, 03 DEC 2020 to 31 DEC 2020