

WAAS CH 86938 W18A	APP CRS 176°	Rwy Idg TDZE 1298 Apt Elev 1304	5513
--	------------------------	---	-------------

RNAV (GPS) RWY 18

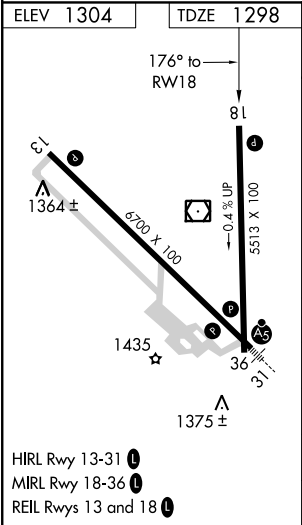
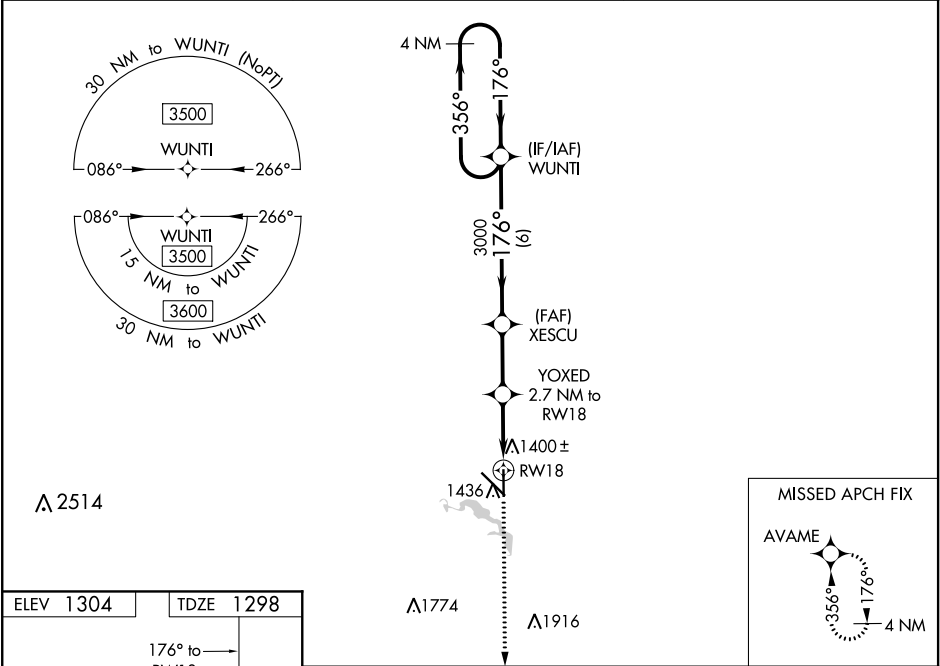
MITCHELL MUNI (MHE')

⚠

For uncompensated Baro-VNAV systems, LNAV/VNAV NA below -20°C (-4°F) or above 54°C (130°F). DME/DME RNP-0.3 NA. When local altimeter setting not received use Huron Rgnl altimeter setting and increase LPV DA to 1637, LNAV/VNAV DA to 1685 and increase all MDA 100 feet. Increase LPV visibility all Cats to 1½ mile, LNAV/VNAV visibility all Cats to 1¾ mile and LNAV Cats C/D to 1¾ mile. Increase Circling Cat C visibility to 1¾ mile. Baro VNAV and VDP NA when using Huron Rgnl altimeter setting.

MISSED APPROACH: Climb to 3500 direct AVAME and hold.

ASOS 124.175	MINNEAPOLIS CENTER 126.25 339.8	UNICOM 122.8 (CTAF) 0
------------------------	---	---------------------------------



4 NM Holding Pattern		WUNTI	XESCU	YOXED	2.7 NM to RW18	*1 NM to RW18	RW18
3500		3500	3000	3000	*2200		
GP 3.00°							
TCH 55							
6 NM		2.5 NM	1.7 NM	1 NM			
CATEGORY	A	B	C	D			
LPV DA	1548-1		250 (300-1)				
LNAV/VNAV DA	1596-1		298 (300-1)				
LNAV MDA	1660-1		362 (400-1)				
CIRCLING	1740-1	1760-1	1820-1½	1860-2			
	436 (500-1)	456 (500-1)	516 (600-1½)	556 (600-2)			