


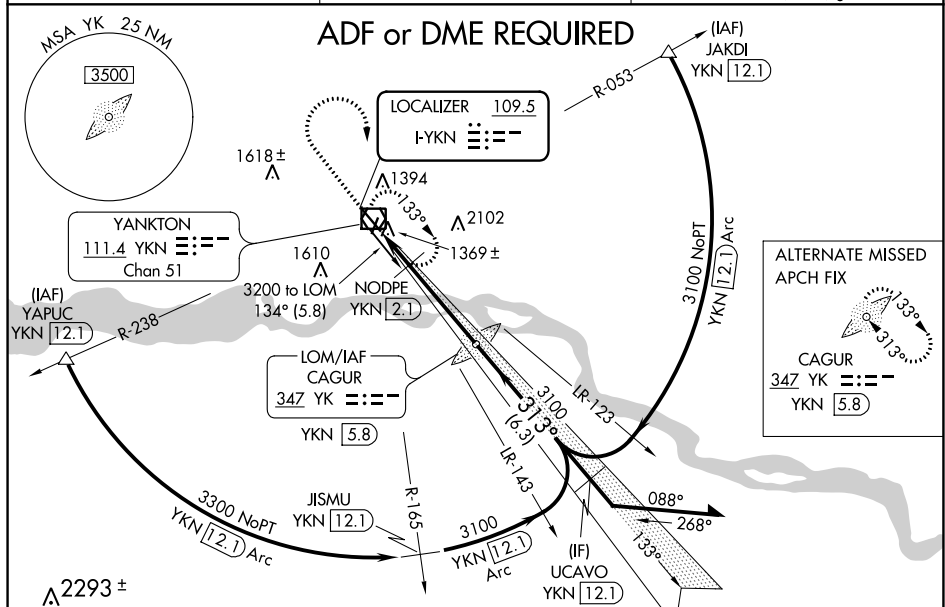


LOC I-YKN <u>109.5</u>	APP CRS 313°	Rwy Idg TDZE Apt Elev	6095 1285 1306
----------------------------------	------------------------	-----------------------------	---

ILS or LOC RWY 31
CHAN GURNEY MUNI (YKN)

 	<p>When VGS1 inop, Circling Rwy 19 NA at night. When local altimeter setting not received, use Sioux Falls altimeter setting and increase all DA 130 feet and all MDA 140 feet, and increase S-ILS 31 visibility all Cats ½ mile, S-LOC 31 Cats C and D ¾ mile, and Circling Cat C ¾ mile, Cat D ½ mile. NODPE fix minimums: increase S-LOC 31 visibility Cats C and D ¾ mile, Circling Cats C and D ½ mile. For inoperative MALS1 when using Sioux Falls altimeter setting, increase S-ILS 31 all Cats visibility to 1½ mile.</p>	<p>MALS1</p> 	<p>MISSED APPROACH: Climb to 3000 then climbing right turn to 3200 direct YKN VOR/DME and hold.</p>
---	--	--	---

AWOS-3PT 119.05	MINNEAPOLIS CENTER 125.025 235.625	UNICOM 122.8 (CTAF) 0
--------------------	---------------------------------------	--------------------------



ELEV 1306

TDZE 1285

REIL Rwy 13

HIRL Rwy 13-31

MIRL Rwy 1-19

FAF to MAP 5.3 NM

	Knots	60	90	120	150	180
Min:Sec	5:18	3:32	2:39	2:07	1:46	

3000 **3200** **YKN**

*1920 when using altimeter setting.
*LOC only **YKN** **NODPE** **YKN** **2.1**

YK LOM **YKN** **5.8**

VGSI and ILS glidepath not coincident
(VGSI Angle 3.00/TCH 48).

6000 **133°** **313°** **3100** **3200**

3040 **1780***

1.6 NM **3.7 NM**

GS 3.00°
TCH 51

Remain within 10 NM

CATEGORY	A	B	C	D
S-ILS 31	1485-½ 200 (200-½)			
S-LOC 31	1780-½ 495 (500-½)		1780-1 495 (500-1)	
CIRCLING	1780-1 474 (500-1)		1780-1½ 474 (500-1½)	1860-2 554 (600-2)
NODPE FIX MINIMUMS (DME REQUIRED)				
S-LOC 31	1620-½ 335 (400-½)		1620-⅝ 335 (400-⅝)	
CIRCLING	1780-1 474 (500-1)		1780-1½ 474 (500-1½)	1860-2 554 (600-2)