

WAAS CH <b>50521</b> <b>W31A</b>	APP CRS <b>313°</b>	Rwy Idg TDZE Apt Elev	<b>6095</b> <b>1285</b> <b>1306</b>
----------------------------------------	------------------------	-----------------------------	-------------------------------------------

RNAV (GPS) RWY 31

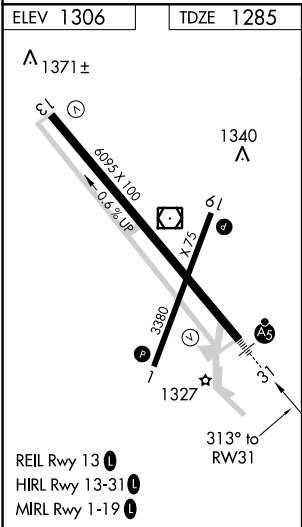
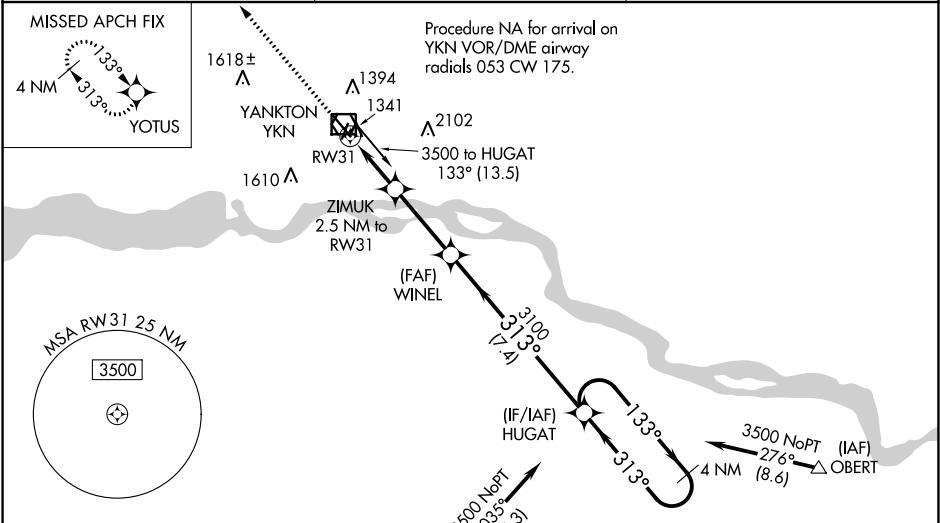
CHAN GURNEY MUNI (YKN)

**⚠** When VGSI inoperative, Circling Rwy 19 NA at night. Baro-VNAV NA when using Sioux Falls altimeter setting. For uncompensated Baro-VNAV systems, LNAV/VNAV NA below -17°C (2°F) or above 35°C (95°F). DME/DME RNP-0.3 NA. VDP NA with Sioux Falls altimeter setting. When local altimeter setting not received, use Sioux Falls altimeter setting and increase all DA 130 feet and all MDA 140 feet. Increase LPV all Cats visibility 1⁄8 mile, LNAV/VNAV all Cats visibility 1⁄4 mile, LNAV Cats C and D visibility 1⁄2 mile and Circling Cats C and D visibility 1⁄4 mile. For inoperative MALSR when using Sioux Falls altimeter setting increase LPV visibility to 1⁄8 all Cats, LNAV/VNAV visibility to 1⁄4 all Cats, LNAV Cats C and D to 1⁄8 and increase Circling Cats C and D 1⁄4 mile.

**MALSR**

**MISSED APPROACH:**  
Climb to 3500 direct YOTUS and hold, continue climb-in-hold to 3500.

AWOS-3PT <b>119.05</b>	MINNEAPOLIS CENTER <b>125.025 235.625</b>	UNICOM <b>122.8 (CTAF) 0</b>
---------------------------	----------------------------------------------	---------------------------------



CATEGORY		A	B	C	D
LPV DA		1485-1⁄2	200 (200-1⁄2)		
LNAV/ VNAV DA		1535-1⁄2	250 (300-1⁄2)		
LNAV MDA		1600-1⁄2	315 (300-1⁄2)		
CIRCLING		1780-1 474 (500-1)	1780-1 1⁄2 474 (500-1 1⁄2)	1860-2 554 (600-2)	