

WAAS CH 57931 W27A	APP CRS 274°	Rwy Idg 4000 TDZE 1372 Apt Elev 1376
--	------------------------	---

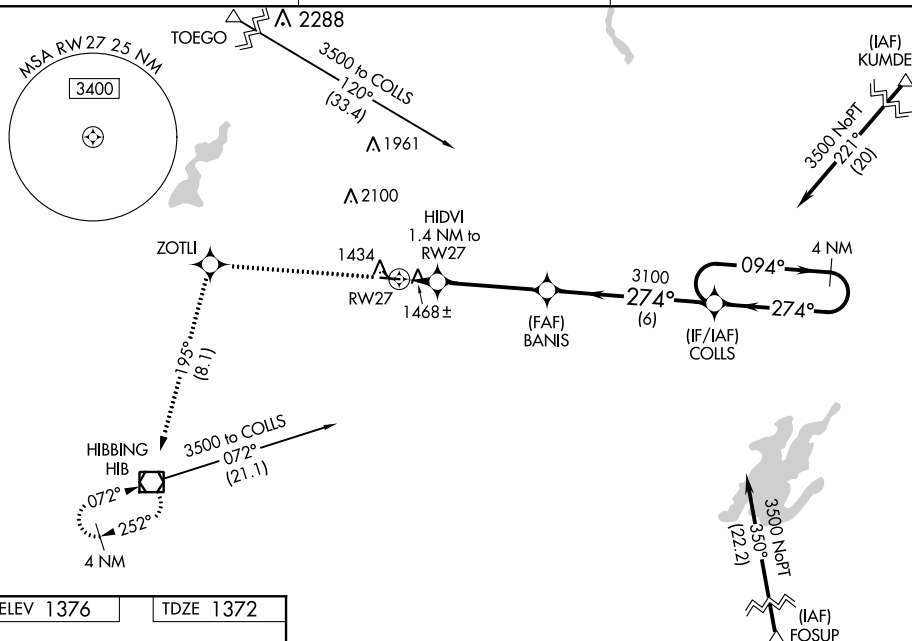
RNAV (GPS) RWY 27
EVELETH-VIRGINIA MUNI (EVM)

EVELETH-VIRGINIA MUNI (EVM)

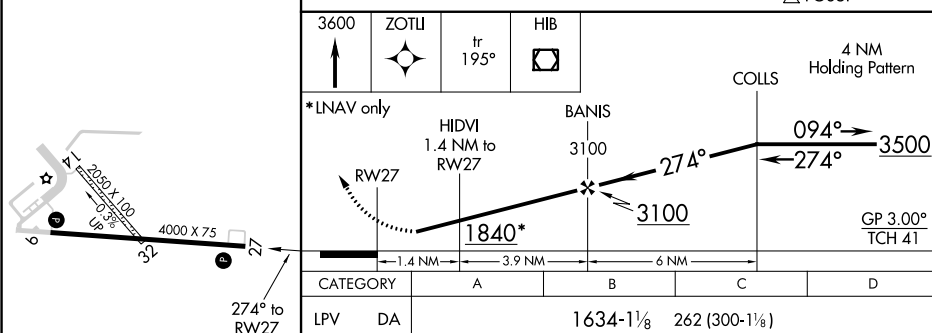
- V** Baro-VNAV NA when using Hibbing altimeter setting. For uncompensated Baro-VNAV systems, procedure NA below -17°C (2°F) or above 54°C (130°F). **A** DME/DME RNP-0.3 NA. When local altimeter setting not received, use Hibbing altimeter setting and increase all DA 36 feet and all MDA 40 feet; increase LNAV Cat C/D visibility $\frac{1}{8}$ and Circling Cat C/D visibility $\frac{1}{4}$ mile. Circling to Rwys 14 and 32 NA. Rwy 27 helicopter visibility reduction below $\frac{3}{4}$ SM NA.

MISSED APPROACH: Climb to 3600
direct ZOTU and on track 195° to
HIB VOR/DME and hold.

AWOS-3 108.2	DULUTH APP CON 125.45 233.7	UNICOM 122.7 (CTAF) 0
------------------------	---------------------------------------	---------------------------------



ELEV 1376		TDZE 1372
-----------	--	-----------



CATEGORY	A	B	C	D
LPV DA	1634-1½ 262 (300-1½)			
LNAV/ VNAV DA	1651-1 279 (300-1)			
LNAV MDA	1720-1 348 (400-1)			
CIRCLING	1880-1 504 (600-1)	1940-1 564 (600-1)	1940-1½ 564 (600-1½)	2040-2 664 (700-2)

MIRL Rwy 9-27 and 14-32 **L**REIL Rwy 27 **L**

EVELETH, MINNESOTA

Orig-B 07DEC17

47°25'N-92°30'W

EVELETH-VIRGINIA MUNI (EVM)

RNAV (GPS) RWY 27