

APP CRS
164°

Rwy Idg
5756

TDZE
1327

Apt Elev
1356

RNAV (GPS) RWY 16

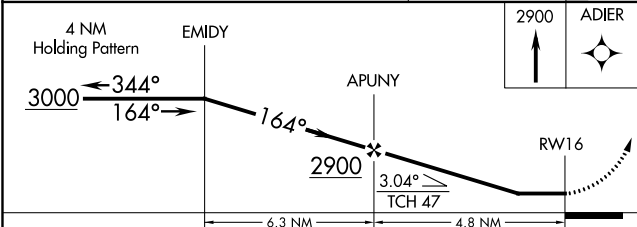
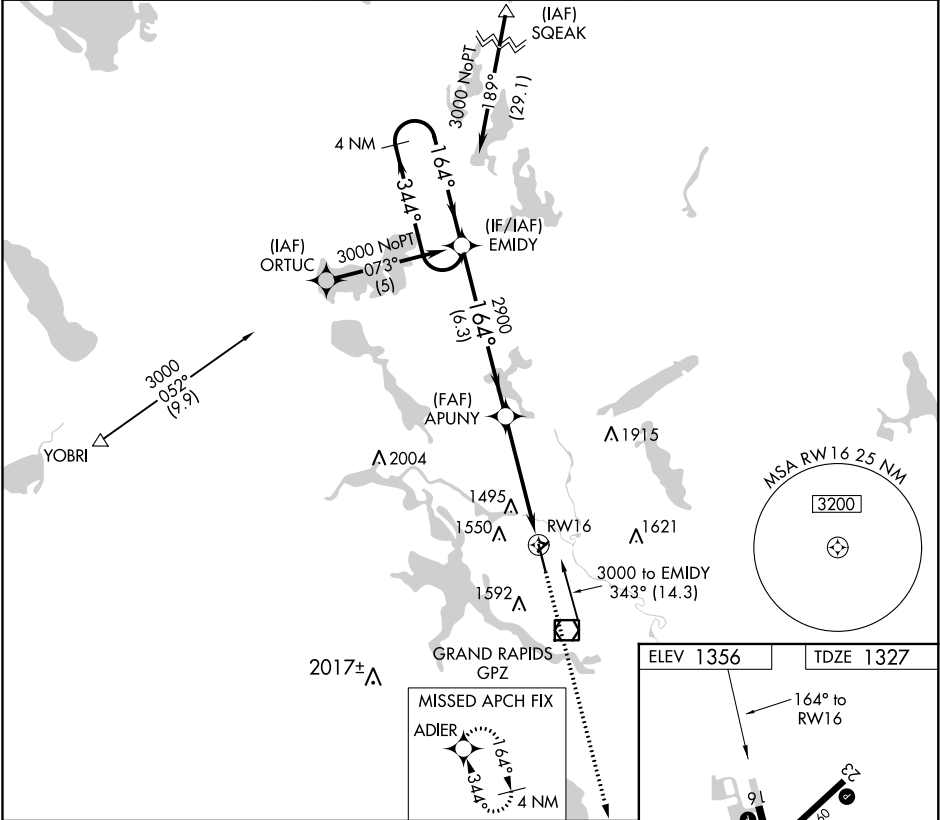
GRAND RAPIDS/ITASCA COUNTY-GORDON NEWSTROM FIELD (GPZ)

RNP APCH.

▼ Circling Rwy 5 NA at night. Circling NA for Cat D east of Rwy 16-34. When local altimeter setting not received, use Hibbing altimeter setting and increase all MDAs 80 feet, increase LNAV Cat C visibility 1/8 SM and Circling Cats C/D visibility 1/4 SM.

MISSED APPROACH:
Climb to 2900 direct ADIER and hold.

AWOS-3PT 118.425	MINNEAPOLIS CENTER 127.9 281.45	UNICOM 122.8 (CTAF) 0
----------------------------	---	---------------------------------



CATEGORY	A	B	C	D
LNAV MDA	1760-1	433 (500-1)	1760-1¼ 433 (500-1¼)	1760-1½ 433 (500-1½)
CIRCLING	1900-1	544 (600-1)	1900-1½ 544 (600-1½)	2000-2 644 (700-2)

ELEV 1356 | TDZE 1327

MIRL Rwy 5-23 0
HIRL Rwy 16-34 0
REIL Rws 5, 16, 23 0