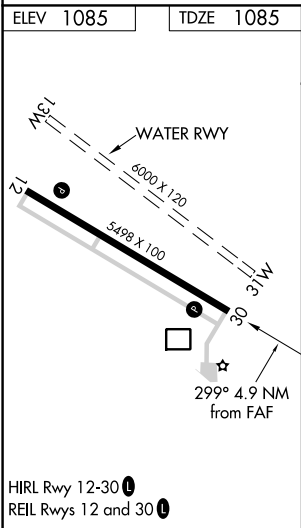
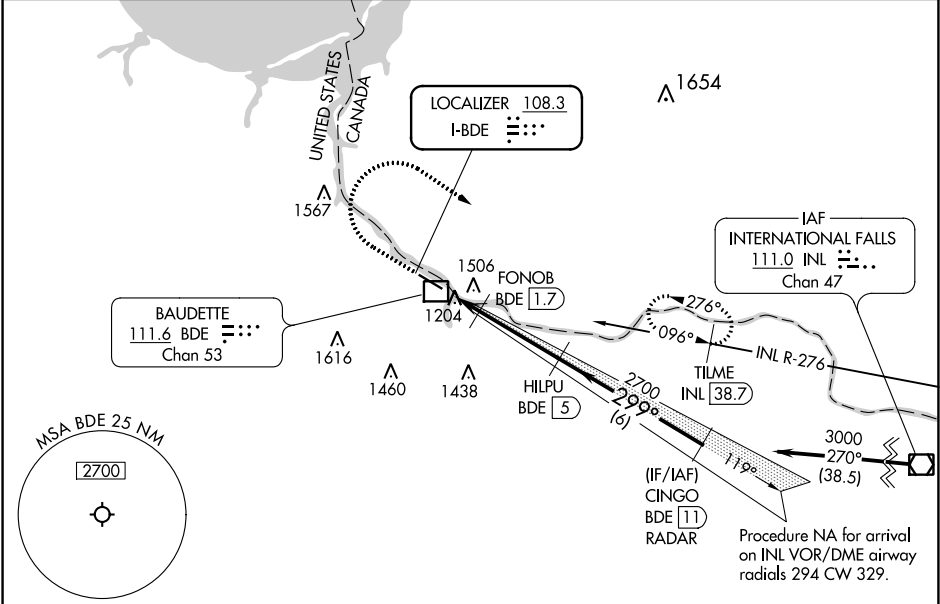


LOC I-BDE	APP CRS	Rwy Idg	5498
108.3	299°	TDZE	1085
		Apt Elev	1085

ILS or LOC RWY 30
BAUDETTE INTL (BDE)

DME required.	MISSED APPROACH: Climb to 2500 then climbing right turn to 4000 heading 122° and INL VOR/DME R-276 to TILME/INL VOR/DME 38.7 DME and hold.
<p>⚠ Circling NA to Rwy 13W and 31W. DME from BDE DME. Simultaneous reception of I-BDE and BDE DME required. Rwy 30 helicopter visibility reduction below ¾ SM NA.</p>	

ASOS 126.775	MINNEAPOLIS CENTER 134.75 251.1	UNICOM 122.8 (CTAF) 0
-----------------	------------------------------------	--------------------------



<div>BEAVER MOA</div>				
2500 ↑	4000 hdg 122°	INL R-276	TILME INL 38.7	
*LOC only		HILPU BDE 5	CINGO BDE 11 RADAR	
<div><div><div>BDE 0.2</div><div>*BDE 0.9</div><div>FONOB BDE 1.7</div></div><div>2700</div><div>299°</div><div>3000</div><div>GS 3.00° TCH 49</div></div> <div><div>0.8 NM</div><div>0.8 NM</div><div>3.3 NM</div><div>6 NM</div></div>				
CATEGORY	A	B	C	D
S-ILS 30	1335-3/4 250 (300-3/4)			
S-LOC 30	1440-1 355 (400-1)			
CIRCLING	1520-1 435 (500-1)	1820-1 735 (800-1)	1820-2 735 (800-2)	1820-2 1/4 735 (800-2 1/4)

NC-1, 03 DEC 2020 to 31 DEC 2020

NC-1, 03 DEC 2020 to 31 DEC 2020