

WAAS CH 78417 W21A	APP CRS 218°	Rwy Idg TDZE 1449 Apt Elev 1470
--	------------------------	---

RNAV (GPS) RWY 21

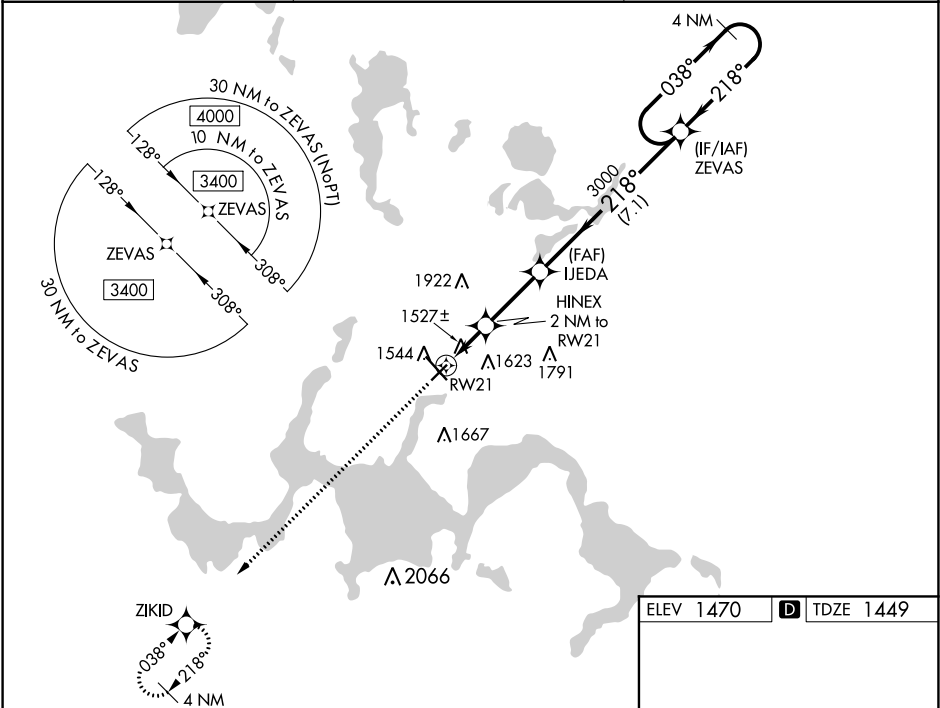
DEVILS LAKE RGNL (DVL)

⚠

For uncompensated Baro-VNAV systems, LNAV/VNAV NA below -17°C (2°F) or above 54°C (130°F). DME/DME RNP-0.3 NA. Helicopter visibility reduction below ¾ SM NA. Baro-VNAV NA when using Cando altimeter setting. VDP NA with Cando altimeter setting. When local altimeter setting not received, use Cando altimeter setting and increase all DA 63 feet, and all MDA 80 feet, increase LNAV and Circling Cats C and D visibility ¼ mile.

MISSED APPROACH: Climb to 3400 direct ZIKID and hold.

AWOS-3PT 125.875	MINNEAPOLIS CENTER 124.2 270.3	UNICOM 122.8 (CTAF)
----------------------------	--	-------------------------------



3400

VGSI and RNAV glidepath not coincident (VGSI Angle 3.00/TCH 25).

HINEX 2 NM to RW21

IJEDA 3000

ZEVAS

4 NM Holding Pattern

RW21

GP 3.00° TCH 50

1.1 0.9 2.7 NM 7.1 NM

