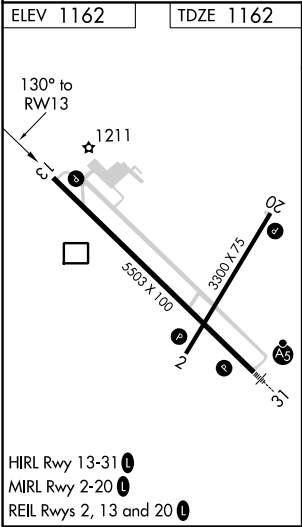
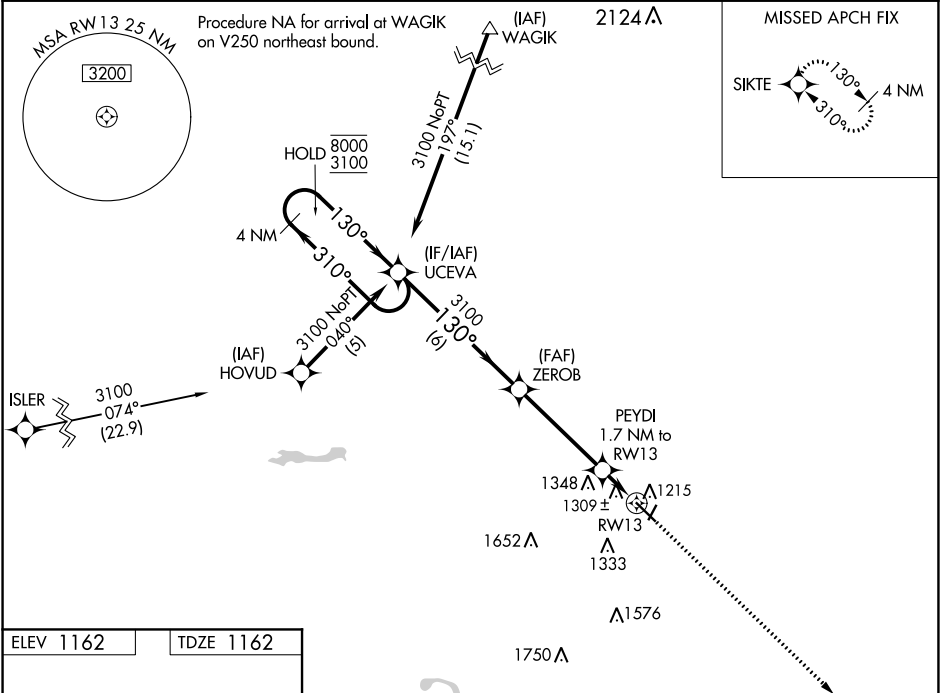


WAAS CH 45812 W13A	APP CRS 130°	Rwy Idg TDZE 1162 Apt Elev 1162
--	------------------------	---

RNAV (GPS) RWY 13
FAIRMONT MUNI (FRM)

RNP APCH.	MISSED APPROACH: Climb to 3100 direct SIKTE and hold.
For uncompensated Baro-VNAV systems, procedure NA below -17°C or above 54°C. Rwy 13 helicopter visibility reduction below ¾ SM NA.	

AWOS-3PT 120.025	MINNEAPOLIS CENTER 127.75 257.7	UNICOM 122.8 (CTAF) 0
----------------------------	---	---------------------------------



VGSI and RNAV glidepath not coincident (VGSI Angle 3.00/TCH 43).					3100 ↑	SIKTE ✦
4 NM Holding Pattern		UCEVA	ZEROB	PEYDI	*LNAV only	
8000 ← 310° 3100 130° →		130° →	3100	1.7 NM to RW13	*1.1 NM to RW13	RW13
GP 3.00° TCH 48		6 NM		4.2 NM	0.6	1.1 NM
CATEGORY	A	B	C	D		
LPV DA	1460-1 298 (300-1)					
LNAV/ VNAV DA	1695-2 533 (600-2)					
LNAV MDA	1560-1 398 (400-1)					1560-1¼ 398 (400-1¼)
CIRCLING	1640-1 478 (500-1)	1660-1 498 (500-1)	1980-2¼ 818 (900-2¼)	1980-2½ 818 (900-2½)		