

LOC I-FFM 111.5	APP CRS 308°	Rwy Idg 5639
	TDZE 1182	
	Apt Elev 1183	

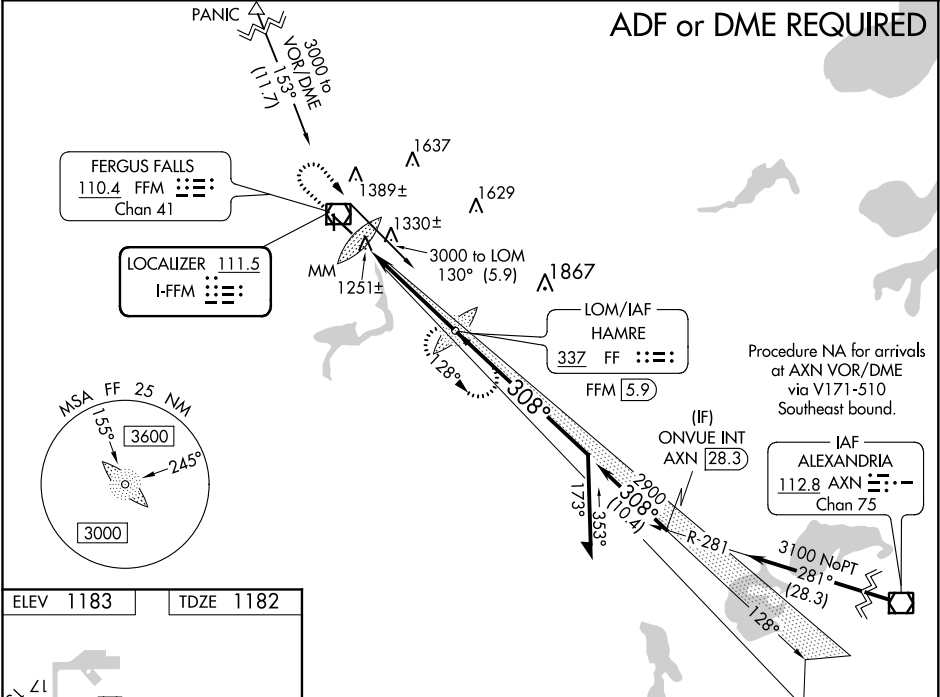
ILS or LOC RWY 31
FERGUS FALLS MUNI-EINAR MICKELSON FIELD (FFM)

⚠ When local altimeter setting not received, use Wheaton altimeter setting and increase all DA 102 feet and all MDA 120 feet, increase S-LOC 31 and Circling Cat C and D visibility ½ mile. For inoperative MALSR, increase S-LOC 31 Cat D visibility ¼ mile. For inoperative MALSR when using Wheaton altimeter setting, increase S-ILS 31 all Cats visibility ½ mile. GS unusable for coupled approaches below 1400.

MALSR

MISSED APPROACH: Climb to 3000 then right turn direct HAMRE LOM/FFM 5.9 DME and hold.

AWOS-3 110.4	MINNEAPOLIS CENTER 126.1 269.2	UNICOM 122.8 (CTAF) 0
------------------------	--	---------------------------------



REIL Rwy 13 and 35	
MIRL Rwy 13-31 and 17-35	
FAF to MAP 5.1 NM	
Knots	60 90 120 150 180
Min:Sec	5:06 3:24 2:33 2:02 1:42

CATEGORY	A	B	C	D
S-ILS 31	1382-½ 200 (200-½)			
S-LOC 31	1520-½ 338 (400-½)			1520-¾ 338 (400-¾)
CIRCLING	1640-1 457 (500-1)	1740-1 557 (600-1)	1740-1½ 557 (600-1½)	1880-2¼ 697 (700-2¼)

NC-1, 03 DEC 2020 to 31 DEC 2020

NC-1, 03 DEC 2020 to 31 DEC 2020