

WAAS
CH **65920**
W13A

APP CRS
128°

Rwy Idg **5639**
TDZE **1182**
Apt Elev **1183**

RNAV (GPS) RWY 13

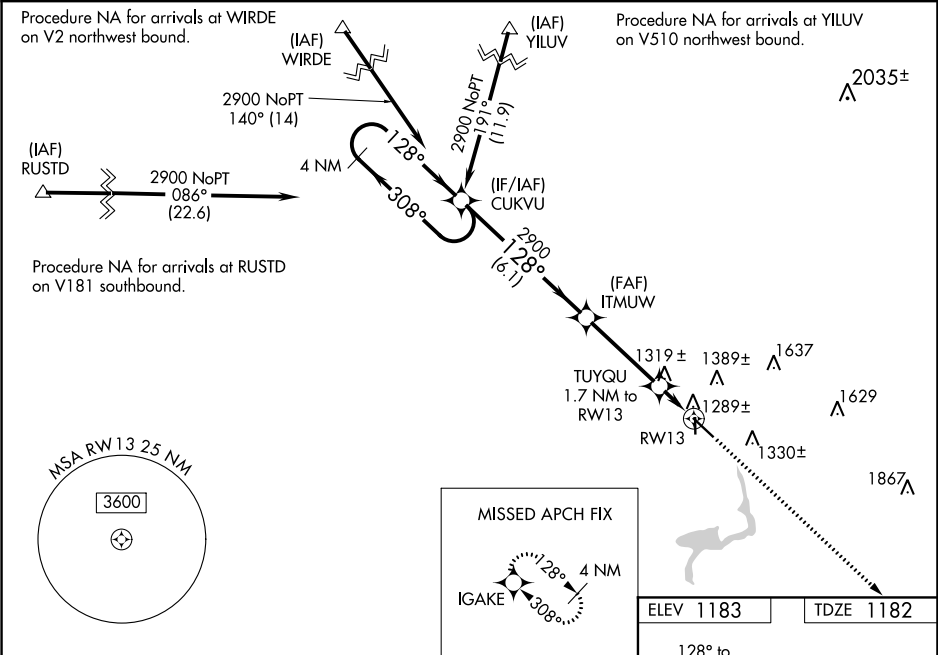
FERGUS FALLS MUNI-EINAR MICKELSON FIELD (FFM)

⚠

For uncompensated Baro-VNAV systems, LNAV/VNAV NA below -17°C (2°F) or above 36°C (96°F). DME/DME RNP-0.3 NA. When local altimeter setting not received, use Wahpeton altimeter setting, and increase all DA 74 feet, increase all MDA 80 feet. Increase LPV 1/8 all Cats, and LNAV/VNAV visibility 1/4 mile all Cats; increase LNAV Cat C and D and Circling Cat C and D visibility 1/4 mile. Baro-VNAV and VDP NA when using Wahpeton altimeter setting.

MISSED APPROACH:
Climb to 2900 direct IGAKE and hold.

AWOS-3 110.4	MINNEAPOLIS CENTER 126.1 269.2	UNICOM 122.8 (CTAF) 0
------------------------	--	--



4 NM Holding Pattern

VGSI and RNAV glidepath not coincident (VGSI Angle 3.00/TCH 52).

2900 IGAKE

CUKVU

ITMUW

TUYQU 1.7 NM to RW13

*LNAV only.

GP 3.00° TCH 40

308°

128°

2900

*1760

*1.1 NM to RW13

RW13

6.1 NM

3.6 NM

0.6

1.1 NM

128° to RW13

35

301 X 75

0.8% UP

3639 X 100

CATEGORY	A	B	C	D
LPV DA		1382-3/4	200 (200-3/4)	
LNAV/VNAV DA		1470-7/8	288 (300-7/8)	
LNAV MDA	1580-1	398 (400-1)	1580-1 1/8	398 (400-1 1/8)
CIRCLING	1640-1 457 (500-1)	1740-1 557 (600-1)	1740-1 1/2 557 (600-1 1/2)	1880-2 1/4 697 (700-2 1/4)

REIL Rwy 13 and 35 **0**

MIRL Rwy 13-31 and 17-35 **0**