

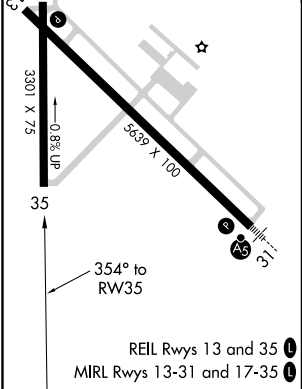
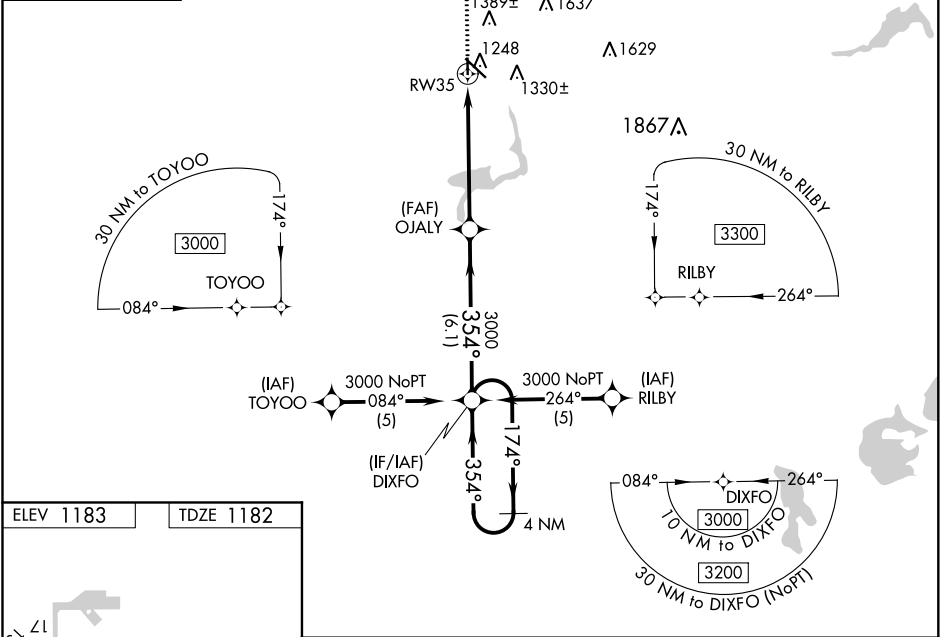
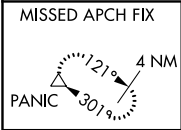
APP CRS	Rwy Idg	<b>3301</b>
<b>354°</b>	TDZE	<b>1182</b>
	Apt Elev	<b>1183</b>

RNAV (GPS) RWY 35

FERGUS FALLS MUNI-EINAR MICKELSON FIELD (F'FM)

<p><b>▼</b> DME/DME RNP-0.3 NA. When local altimeter setting not received, use Wheaton altimeter setting and increase all MDA 120 feet and LNAV Cat C visibility ¼ mile, Circling Cat C ½ mile. VDP NA when using Wheaton altimeter setting.</p> <p><b>▲</b></p>	<p>MISSED APPROACH: Climb to 3000 direct WABIV and via track 326° to PANIC and hold.</p>
--	--

AWOS-3 <b>110.4</b>	MINNEAPOLIS CENTER <b>126.1 269.2</b>	UNICOM <b>122.8 (CTAF) 0</b>
------------------------	--	---------------------------------



3000	WABIV	tr 326°	PANIC	4 NM Holding Pattern
CATEGORY	A	B	C	D
LNAV MDA	1500-1 318 (400-1)			NA
CIRCLING	1640-1 457 (500-1)	1740-1 557 (600-1)	1740-1½ 557 (600-1½)	NA

RNAV (GPS) RWY 35