

|  |                        |   |
|--|------------------------|---|
| WAAS<br>CH <b>81932</b><br><b>W12A</b> | APP CRS<br><b>125°</b> | Rwy Idg<br>TDZE <b>1060</b><br>Apt Elev <b>1060</b> |
|--|------------------------|---|

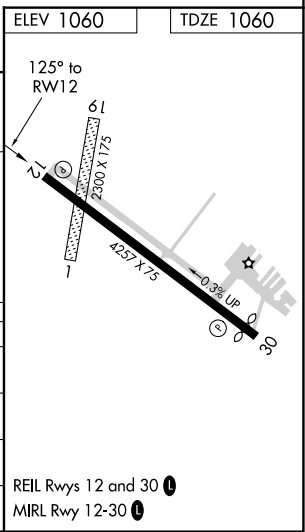
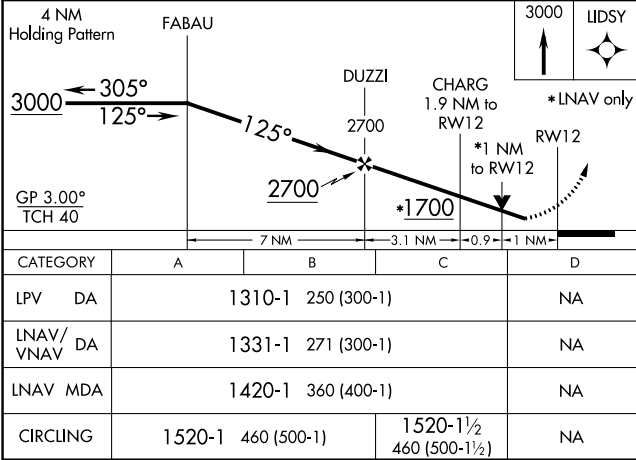
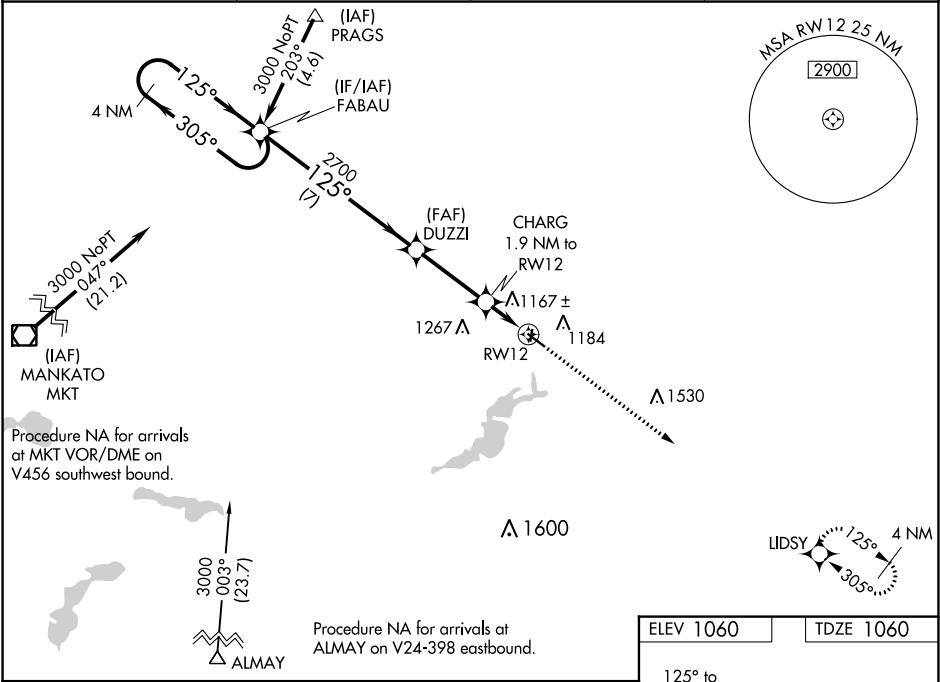
RNAV (GPS) RWY 12

FARIBAULT MUNI-LIZ WALL STROHFUS FIELD (F'BL)

▼ Baro-VNAV and VDP NA when using Owatonna altimeter setting. For uncompensated Baro-VNAV systems, LNAV/VNAV NA below -17°C (2°F) or above 54°C (130°F). DME/DME RNP-0.3 NA. When local altimeter setting not received, use Owatonna altimeter setting and increase all DA 41 feet and all MDA 60 feet; increase LNAV Cat C visibility ½ mile. Rwy 12 helicopter visibility reduction below ¾ SM NA. Circling to Rwy 1, 19 NA.

MISSED APPROACH:  
Climb to 3000 direct  
LIDSY and hold.

|                        |   |                       |                                 |
|------------------------|---|-----------------------|---------------------------------|
| AWOS-3<br><b>111.2</b> | MINNEAPOLIS APP CON<br><b>134.7 284.7</b> | GCO<br><b>121.725</b> | UNICOM<br><b>122.8 (CTAF) 0</b> |
|------------------------|---|-----------------------|---------------------------------|



NC-1, 03 DEC 2020 to 31 DEC 2020

NC-1, 03 DEC 2020 to 31 DEC 2020