

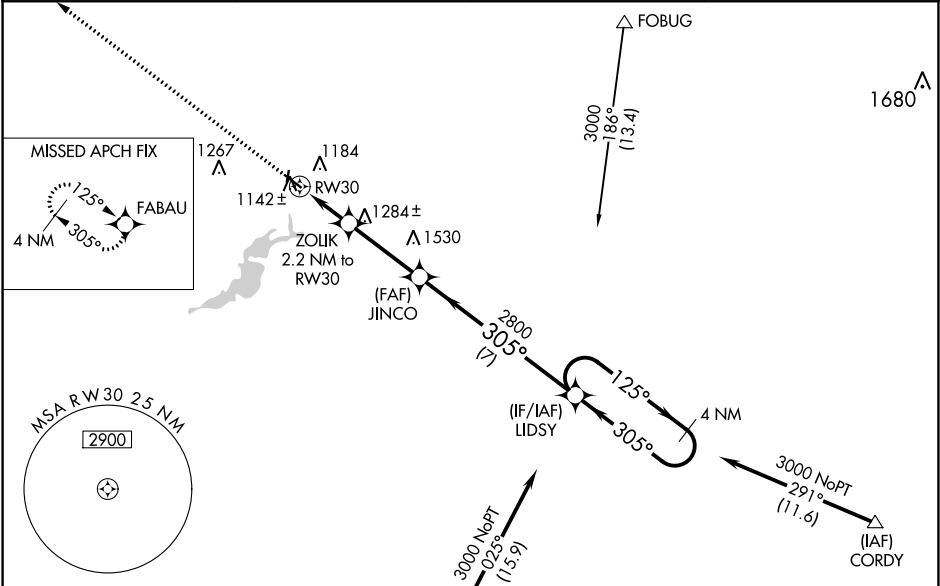
WAAS CH 61032 W30A	APP CRS 305°	Rwy Idg TDZE 1056 Apt Elev 1060
--	------------------------	---

RNAV (GPS) RWY 30
FARIBAULT MUNI-LIZ WALL STROHFUS FIELD (F'BL)

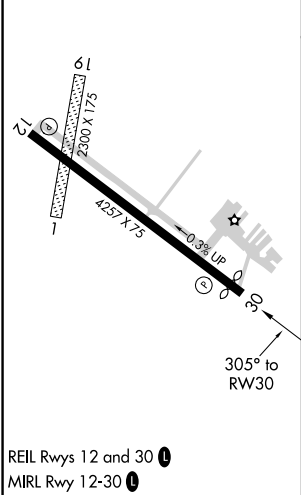
⚠ For uncompensated Baro-VNAV systems, LNAV/VNAV NA below -17°C (2°F) or above 54°C (130°F). DME/DME RNP-0.3 NA. When local altimeter setting not received, use Owatonna altimeter setting and increase all DA 41 feet and all MDA 60 feet; increase LNAV Cat C visibility 1/8 mile. Baro-VNAV and VDP NA when using Owatonna altimeter setting. Circling NA to Rwy's 1 and 19.

MISSED APPROACH: Climb to 3000 direct FABAU and hold.

AWOS-3 111.2	MINNEAPOLIS APP CON 134.7 284.7	GCO 121.725	UNICOM 122.8 (CTAF) 0
------------------------	---	-----------------------	---------------------------------



ELEV 1060	TDZE 1056
-----------	-----------



3000 FABAU	LIDSY 4 NM Holding Pattern
* LNAV only	JINCO 2800 125° 305° 3000
* 1 NM to RW30	ZOLIK 2.2 NM to RW30 1780* 2800
1 NM 1.2 3.2 NM 7 NM	GP 3.00° TCH 40
CATEGORY	A B C D
LPV DA	1306-1 250 (300-1) NA
LNAV/ VNAV DA	1306-1 250 (300-1) NA
LNAV MDA	1400-1 344 (400-1) NA
CIRCLING	1520-1 460 (500-1) 1520-1½ 460 (500-1½) NA

NC-1, 03 DEC 2020 to 31 DEC 2020

NC-1, 03 DEC 2020 to 31 DEC 2020