

WAAS CH 82627 W12A	APP CRS 122°	Rwy Idg TDZE 1127 Apt Elev 1145
--	------------------------	---

RNAV (GPS) RWY 12

OWATONNA DEGNER RGNL (OWA)

RNP APCH

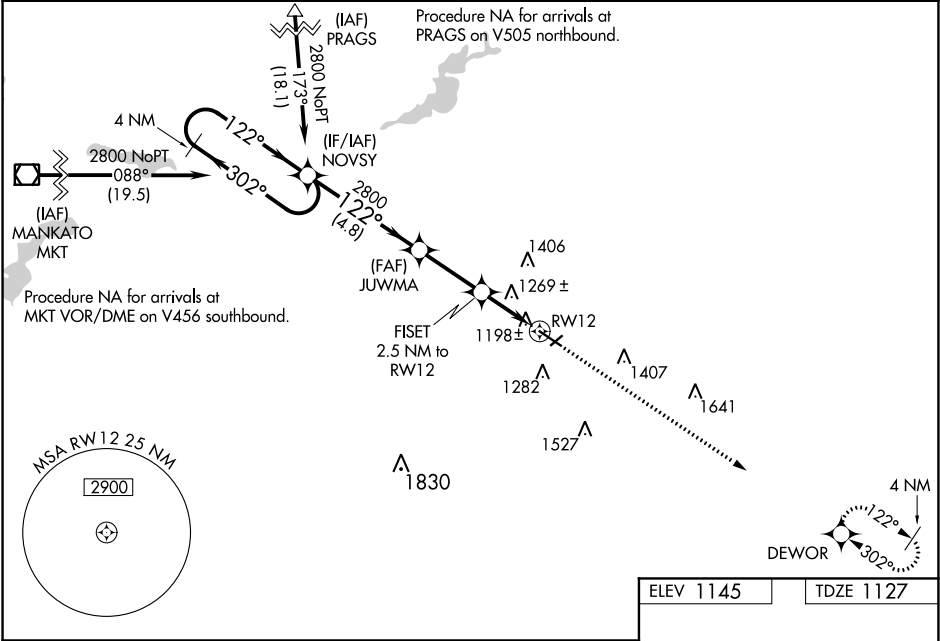
▼

▲

Baro-VNAV NA when using Faribault altimeter setting. For uncompensated Baro-VNAV systems, LNAV/VNAV NA below -17°C (2°F) or above 36°C (96°F). VDP NA with Faribault altimeter setting. When local altimeter setting not received, use Faribault altimeter setting and increase all DA 41 feet and all MDA 60 feet. Increase LPV all Cats visibility to 1¼ SM. Increase LNAV/VNAV all Cats visibility to 1 SM and LNAV Cat C/D visibility to 1¾ SM. Increase Circling Cat C visibility to 1¾ SM and Cat D visibility to 2½ SM.

MISSED APPROACH:
Climb to 2900 direct DEWOR and hold.

AWOS-3 128.325	ROCHESTER APP CON ★ 119.8 251.125	UNICOM 122.7 (CTAF) 0
--------------------------	---	---------------------------------



4 NM Holding Pattern

NOVSY

JUWMA

FISET 2.5 NM to RWY 12

2900 DEWOR

*LNAV only

122° to RWY 12

0.7% UP

5500 X 100

3000 X 75

1:30

GP 3.00°	TCH 40	4.8 NM	2.7 NM	1.3 NM	1.2 NM
CATEGORY	A	B	C	D	
LPV DA	1441-1		314 (300-1)		
LNAV/VNAV DA	1400-¾		273 (300-¾)		
LNAV MDA	1520-1	393 (400-1)	1520-1½	393 (400-1½)	
CIRCLING	1640-1 495 (500-1)	1700-1 555 (600-1)	1720-1½ 575 (600-1½)	1880-2¼ 735 (800-2¼)	

MIRL Rwy 5-23

REIL Rws 5, 12, and 23

HIRL Rwy 12-30