

WAAS
CH **49032**
W14A

APP CRS
142°

Rwy Idg
TDZE
Apt Elev

4002
1131
1136

RNAV (GPS) RWY 14

MORRIS MUNI-CHARLIE SCHMIDT FIELD (MOX)

RNP APCH

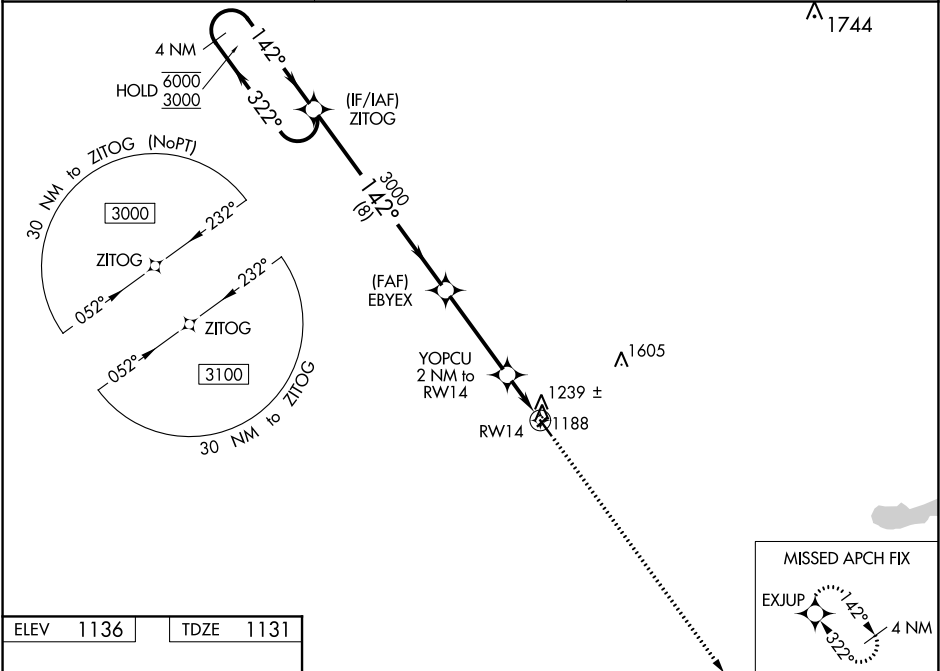
⚠

Circling NA to Rwy's 4 and 22. Baro-VNAV and VDP NA when using Benson altimeter setting.
⚠ For uncompensated Baro-VNAV systems, LNAV/VNAV NA below -17°C or above 54°C. When local altimeter setting not received, use Benson altimeter setting and increase LPV DA to 1440 feet
LNAV/VNAV DA to 1602 feet and all MDA 60 feet, increase LNAV and Circling Cat C visibility ¼ SM.

MISSED APPROACH:

Climb to 3500 direct EXJUP and hold.

AWOS-3 109.6	MINNEAPOLIS CENTER 126.1 269.2	UNICOM 122.8 (CTAF) 0
------------------------	--	---------------------------------



ELEV 1136

TDZE 1131

142° to RWY 14

0.5% UP

2637 X 145

4002 X 75

MIRL Rwy 14-32

REIL Rwy's 14 and 32

VGSI and RNAV glidepath not coincident.					
4 NM Holding Pattern		ZITOG	EBYEX	YOPCU 2 NM to RWY 14	EXJUP
6000 ← 322°		3000	3000	*1800	3500
3000 → 142°		142°			
GP 3.00°					
TCH 44					
		8 NM	3.7 NM	1 NM	1 NM
CATEGORY	A	B	C	D	
LPV DA	1381-1		250 (300-1)		NA
LNAV/VNAV DA	1543-1⅓		412 (500-1⅓)		NA
LNAV MDA	1500-1		369 (400-1)		NA
CIRCLING	1560-1 424 (500-1)	1600-1 464 (500-1)	1860-2 724 (800-2)	NA	