

VOR/DME DTL <b>111.2</b> Chan <b>49</b>	APP CRS <b>310°</b>	Rwy Idg <b>4502</b> TDZE <b>1390</b> Apt Elev <b>1397</b>
---	------------------------	---

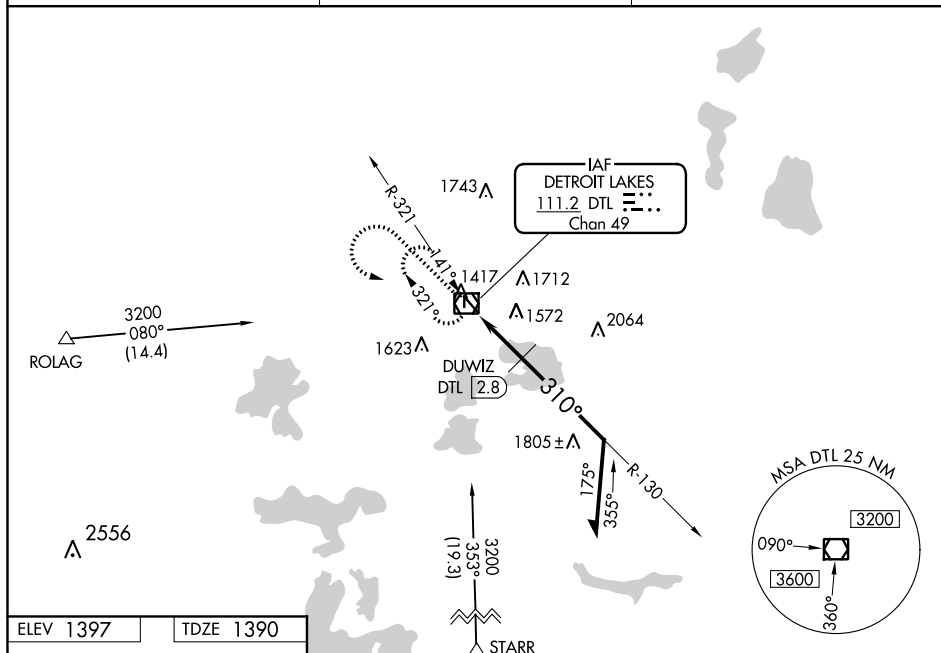
VOR RWY 31

DETROIT LAKES-WETHING FIELD (DTL)

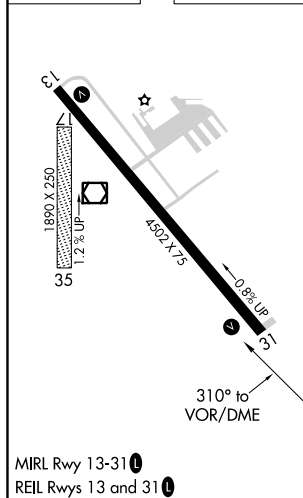
**T** When local altimeter setting not received, use Park Rapids altimeter setting and increase all MDA 100 feet, increase S-31 and Circling Cats C/D visibility ½ mile, Circling Cat A visibility ¼ mile, increase DUWIZ fix minimums S-31 Cat C, D visibility ⅜ mile, Circling Cat C visibility ¼ mile and Cat D ½ mile. Visibility reduction by helicopters NA. Procedure NA at night.

**MISSED APPROACH:** Climb to 2500 then climbing left turn to 3200 direct DTL VOR/DME and hold.

AWOS-3 <b>111.2</b>	MINNEAPOLIS CENTER <b>126.1 269.2</b>	UNICOM <b>122.8 (CTAF) 0</b>
------------------------	--	---------------------------------



ELEV 1397		TDZE 1390
-----------	--	-----------



2500 3200 DTL

DTL VOR/DME

Remain within 10 NM

DUWIZ DTL 2.8° TCH 35°

3100 2120\*

\* 2220 when using Park Rapids altimeter setting.

CATEGORY	A	B	C	D
S-31	2120-1 730 (800-1)	2120-1¼ 730 (800-1¼)	2120-2	730 (800-2)
CIRCLING	2120-1 723 (800-1)	2120-1¼ 723 (800-1¼)	2120-2 723 (800-2)	2120-2¼ 723 (800-2¼)
DUWIZ FIX MINIMUMS				
S-31	1880-1	490 (500-1)	1880-1⅝	490 (500-1⅝)
CIRCLING	1880-1 483 (500-1)	1940-1 543 (600-1)	1940-1½ 543 (600-1½)	2080-2¼ 683 (700-2¼)