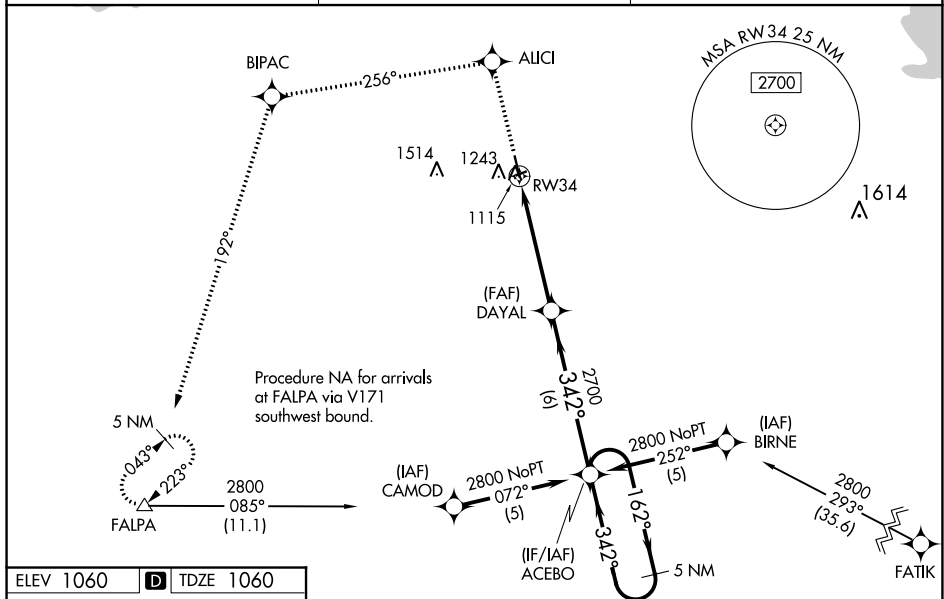


|  |                        |   |
|--|------------------------|---|
| WAAS<br>CH <b>99404</b><br><b>W34A</b> | APP CRS<br><b>342°</b> | Rwy Idg <b>4401</b><br>TDZE <b>1060</b><br>Apt Elev <b>1060</b> |
|--|------------------------|---|

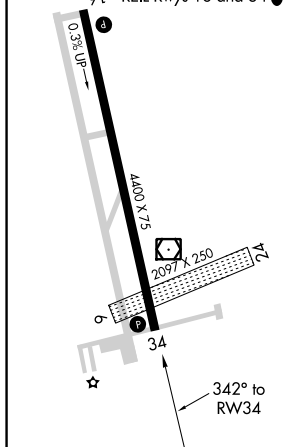
## RNAV (GPS) RWY 34

ROSEAU MUNI/RUDY BILLBERG FIELD (ROX)

|   |   |                                    |  |
|---|---|------------------------------------|--|
| <div><div>V</div><div>A</div><div>W</div></div> | If local altimeter setting not received, use Warroad altimeter setting and increase all DAs 36 feet/MDAs 40 feet.<br>VDP NA when using Warroad altimeter setting.<br>Baro-VNAV NA when using Warroad altimeter setting.<br>For uncompensated Baro-VNAV systems, LNAV/VNAV NA below -17°C (2°F) or above 46°C (114°F).<br>Visibility reduction by helicopters NA.      DME/DME RNP-0.3 NA. |                                    | MISSED APPROACH: Climb to 2900 direct AUCI and via 256° track to BIPAC and 192° track to FALPA and hold. |
|   | AWOS-3<br>108.8   | MINNEAPOLIS CENTER<br>134.75 251.1 | UNICOM<br>122.8 (CTAF) 0   |



|                                  |          |           |
|----------------------------------|----------|-----------|
| ELEV 1060                        | <b>D</b> | TDZE 1060 |
| MIRL Rwy 16-34 <b>L</b>          |          |           |
| 01 REIL Rwy 16 and 34 <b>L</b> ★ |          |           |



|                  |           |                    |            |                         |            |  |   |
|------------------|-----------|--------------------|------------|-------------------------|------------|--|---|
| 2900<br>↑        | ALCI<br>✱ | 256°<br>tr         | BIPAC<br>✱ | 192°<br>tr              | FALPA<br>△ | VGSI and RNAV glidepath not<br>coincident (VGSI Angle 3.00°/<br>TCH 44). |   |
|                  |           |                    |            |                         |            | 5 NM<br>Holding Pattern  |   |
| *INAV only.      |           |                    |            |                         |            | ACEBO  |   |
| DAYAL            |           |                    |            |                         |            | 162° → 2800<br>← 342°  |   |
| RW34             |           |                    |            |                         |            | GP 3.00°<br>TCH 40   |   |
| CATEGORY         |           | A                  |            | B                       |            | C  | D |
| LPV DA           |           | 1310-1             |            | 250 (300-1)             |            |  |   |
| INAV/<br>VNAV DA |           | 1485-1½            |            | 425 (500-1½)            |            |  |   |
| INAV MDA         |           | 1560-1 500 (500-1) |            | 1560-1¼<br>500 (500-1¼) |            | 1560-1½<br>500 (500-1½)  |   |
| CIRCLING         |           | 1600-1 540 (600-1) |            | 1600-1½<br>540 (600-1½) |            | 1640-2<br>580 (600-2)  |   |

RNAV (GPS) RWY 34