

VOR/DME ROX	APP CRS	Rwy Idg	4401
108.8	349°	TDZE	1060
Chan 25		Apt Elev	1060

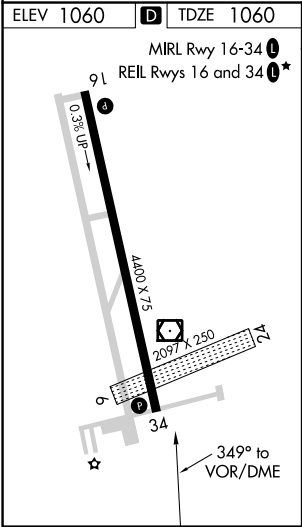
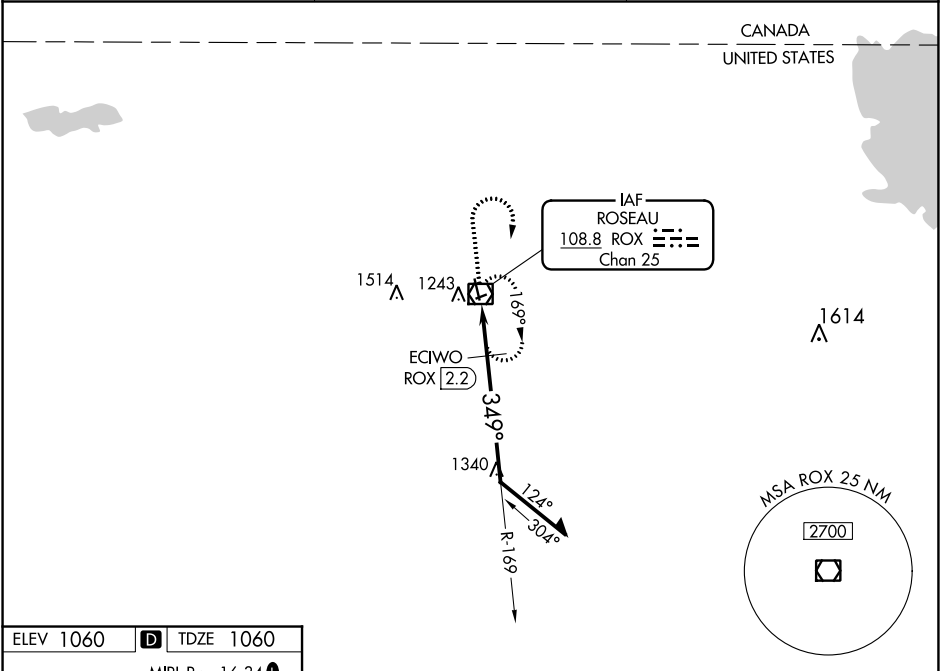
VOR RWY 34
ROSEAU MUNI/RUDY BILLBERG FIELD (ROX)

⚠ NA

If local altimeter setting not received, use Warroad altimeter setting and increase all MDAs 40 feet.
VDP NA when using Warroad altimeter setting.
Visibility reduction by helicopters NA.

MISSED APPROACH: Climb to 3000 then right turn direct ROX VOR/DME and hold.

AWOS-3 108.8	MINNEAPOLIS CENTER 134.75 251.1	UNICOM 122.8 (CTAF) 1
-----------------	------------------------------------	---------------------------------



3000

↑

↷

ROX

ROX

VOR/DME

169°

Remain within 10 NM

*1740 when using Warroad altimeter setting.

VGSI and descent angles not coincident (VGSI Angle 3.00/TCH 44).

ROX 1.7

ECIWO ROX 2.2

2.78°

TCH 40

349°

1700*

2800

1.5 NM

0.5 NM

CATEGORY	A	B	C	D
S-34	1700-1	640 (700-1)	1700-1¾ 640 (700-1¾)	1700-2 640 (700-2)
CIRCLING	1700-1	640 (700-1)	1700-1¾ 640 (700-1¾)	1700-2 640 (700-2)
ECIWO FIX MINIMUMS				
S-34	1560-1	500 (500-1)	1560-1¼ 500 (500-1¼)	1560-1½ 500 (500-1½)
CIRCLING	1600-1	540 (600-1)	1600-1½ 540 (600-1½)	1640-2 580 (600-2)

NC-1, 03 DEC 2020 to 31 DEC 2020

NC-1, 03 DEC 2020 to 31 DEC 2020