
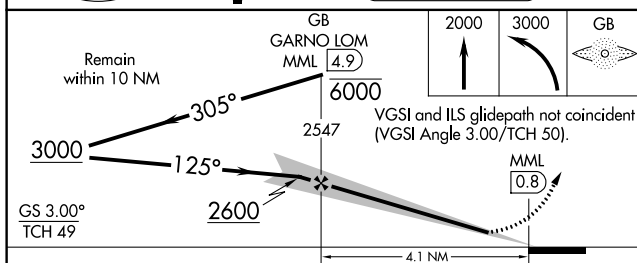
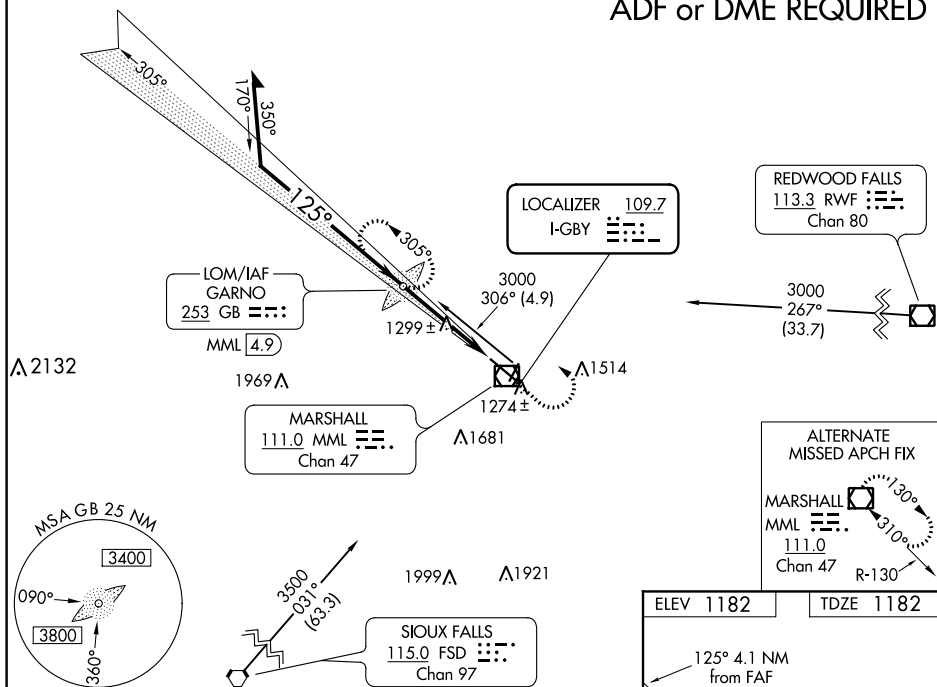


ILS or LOC RWY 12
SOUTHWEST MINNESOTA RGNL MARSHALL/RYAN FIELD (MML)

MALSR 	MISSED APPROACH: Climb to 2000 then climbing left turn to 3000 direct GARNO LOM/MML 4.9 DME and hold.
--	---

AWOS-3PT 120.150	MINNEAPOLIS CENTER 127.1 290.2	GCO 121.725	UNICOM 122.8 (CTAF) 0
----------------------------	--	-----------------------	---------------------------------

ADF or DME REQUIRED



CATEGORY	A	B	C	D
S-ILS 12	1382-½ 200 (200-½)			
S-LOC 12	1560-½ 378 (400-½)			1560-¾ 378 (400-¾)
CIRCLING	1640-1 458 (500-1)	1640-1½ 458 (500-1½)		1740-2 558 (600-2)

