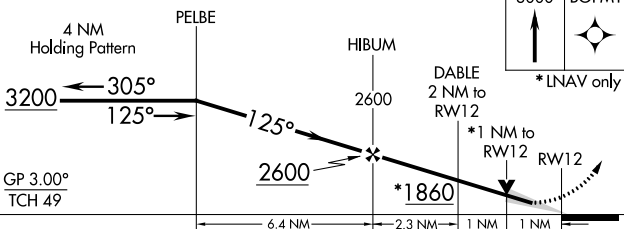
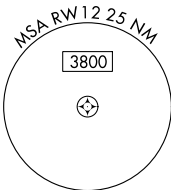
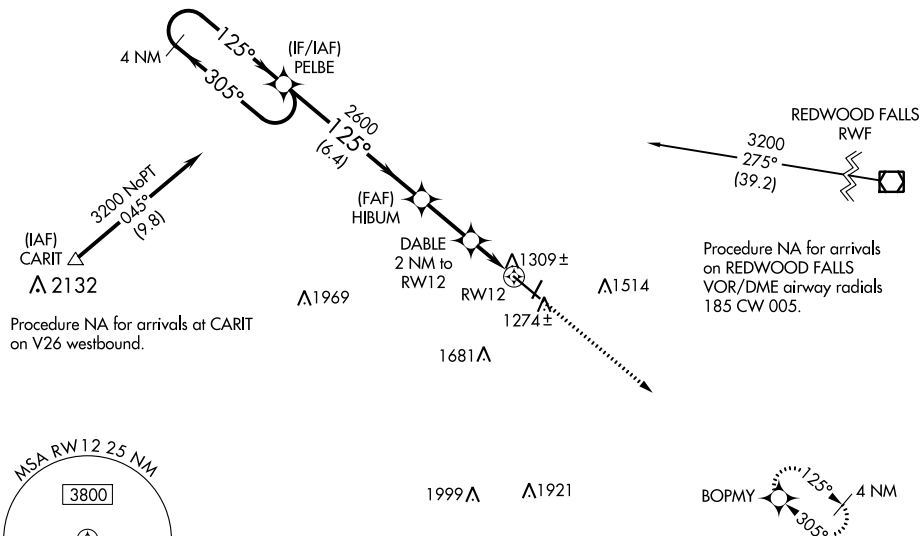


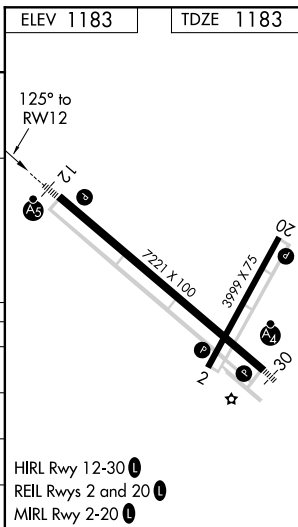
RNAV (GPS) RWY 12

SOUTHWEST MINNESOTA RGNL MARSHALL/RYAN FIELD (MML)

MISSED APPROACH:
Climb to 3000 direct
BOPMY and hold.

UNICOM
122.8 (CTAF) **L**

CATEGORY	A	B	C	D
LPV DA	1383-1/2 200 (200-1/2)			
LNAV/VNAV DA	1490-1/2 307 (400-1/2)			
LNAV MDA	1560-1/2 377 (400-1/2)		1560-5/8 377 (400-5/8)	
CIRCLING	1640-1 457 (500-1)		1640-1 1/2 457 (500-1 1/2)	1740-2 557 (600-2)



RNAV (GPS) RWY 12