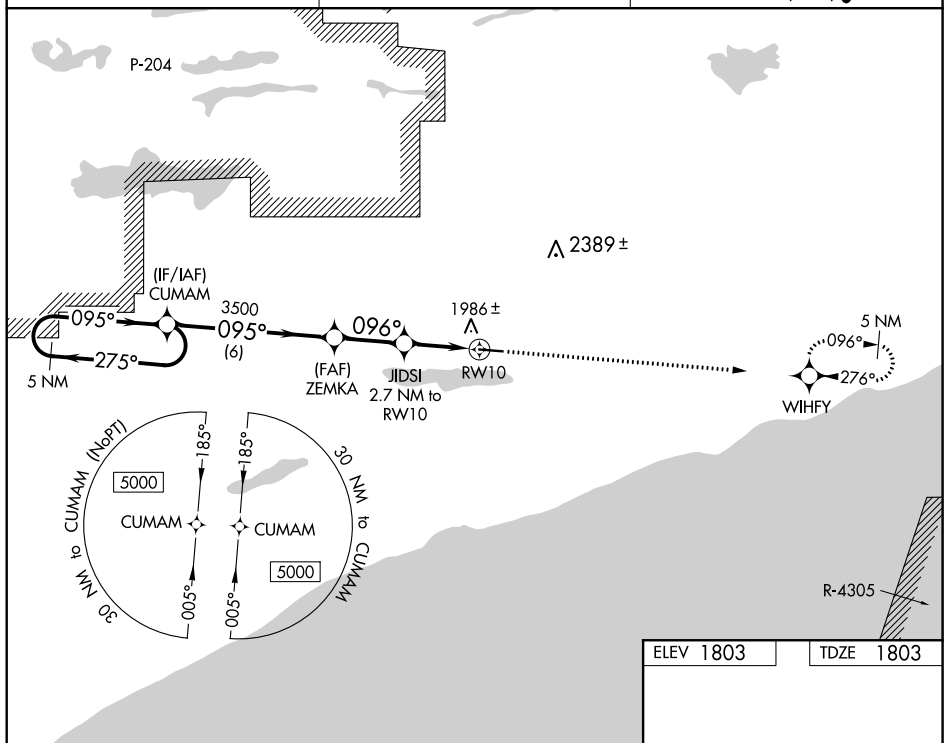




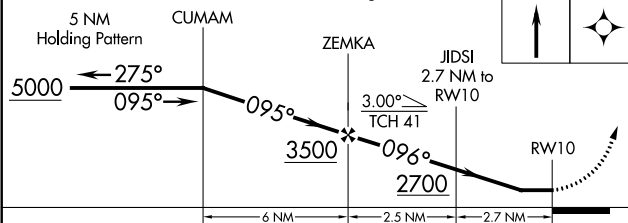
# RNAV (GPS) RWY 10

## GRAND MARAIS/COOK COUNTY (CKC)

**MISSED APPROACH:** Climb to 7000 direct WHFY and hold, continue climb-in-hold to 7000.

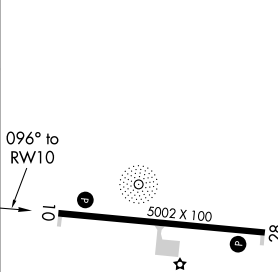
UNICOM  
122.8 (CTAF) **L**

7000	WIHFY
	



CATEGORY	A	B	C	D
LP MDA	2200-1	397 (400-1)	2200-1 $\frac{1}{8}$	397 (400- $\frac{1}{8}$ )
LNAV MDA	2240-1	437 (500-1)	2240-1 $\frac{1}{4}$	437 (500- $\frac{1}{4}$ )
<b>C</b> CIRCLING	2300-1	497 (500-1)	2380-1 $\frac{1}{2}$ 577 (600- $\frac{1}{2}$ )	2640-2 $\frac{3}{4}$ 837 (900-2 $\frac{3}{4}$ )

\_\_\_\_\_



MIRL Rwy 10-28 **L**  
REIL Rwy 10 and 28 **L**