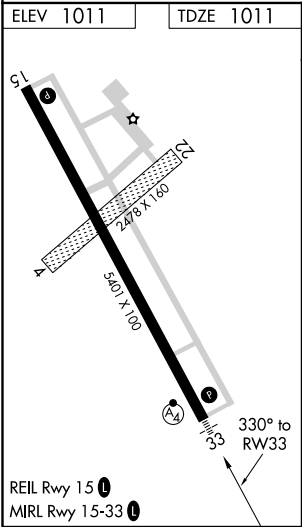
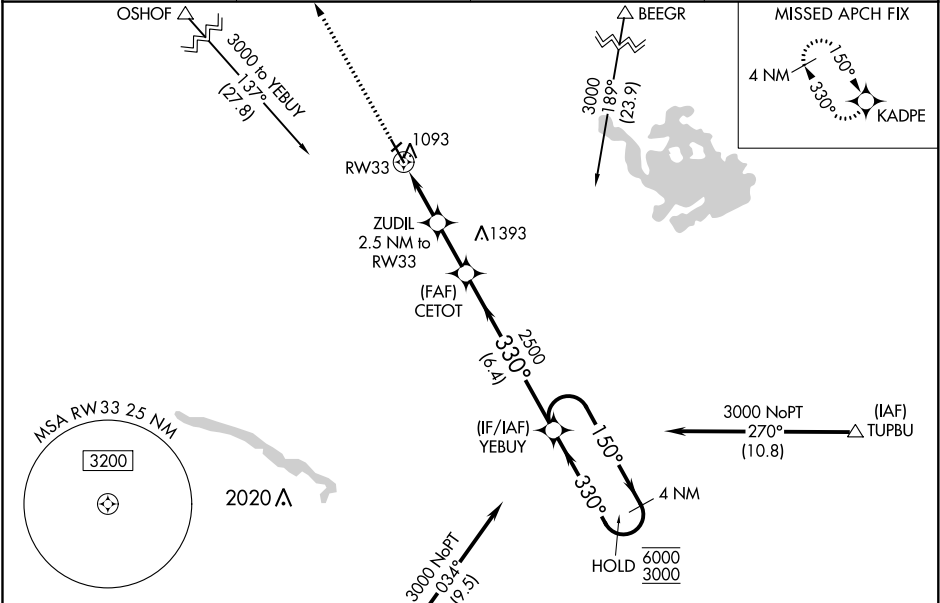





WAAS CH 56631 W33A	APP CRS 330°	Rwy Idg 5401 TDZE 1011 Apt Elev 1011
--	------------------------	---

RNAV (GPS) RWY 33
NEW ULM MUNI (ULM)

RNP APCH. Circling NA to Rwy 4 and 22. For uncompensated Baro-VNAV systems, LNAV/VNAV NA below -17°C or above 54°C. Inop table does not apply to LPV all Cats. For inop ALS, increase LNAV/VNAV all Cats visibility to 7/5 SM, LNAV Cat D to 1 1/5 SM.	MALSF 	MISSED APPROACH: Climb to 3000 direct KADPE and hold.
---	-----------	---

AWOS-3 118.325	MINNEAPOLIS CENTER 127.1 290.2	GCO 121.725	UNICOM 122.8 (CTAF) 0
--------------------------	--	-----------------------	---------------------------------



(IAF) WAGIK 					
3000 	KADPE 	VGSi and RNAV glidepath not coincident (VGSi Angle 3.00/TCH 50).		YEBUY 4 NM Holding Pattern	
*LNAV only.		ZUDIL 2.5 NM to RW33	CETOT 2500	150° → <u>6000</u> ← 330° <u>3000</u>	

NC-1, 03 DEC 2020 to 31 DEC 2020

NC-1, 03 DEC 2020 to 31 DEC 2020