

WAAS
CH **72704**
W13A

APP CRS
128°

Rwy Idg
TDZE **896**
Apt Elev **900**

RNAV (GPS) RWY 13

CROOKSTON MUNI-KIRKWOOD FIELD (CKN)

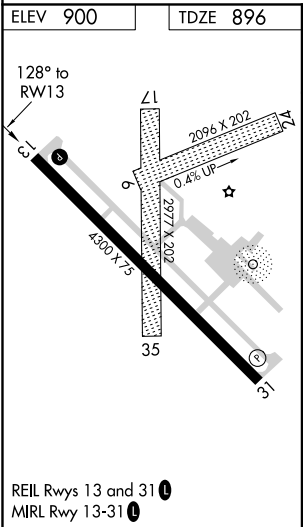
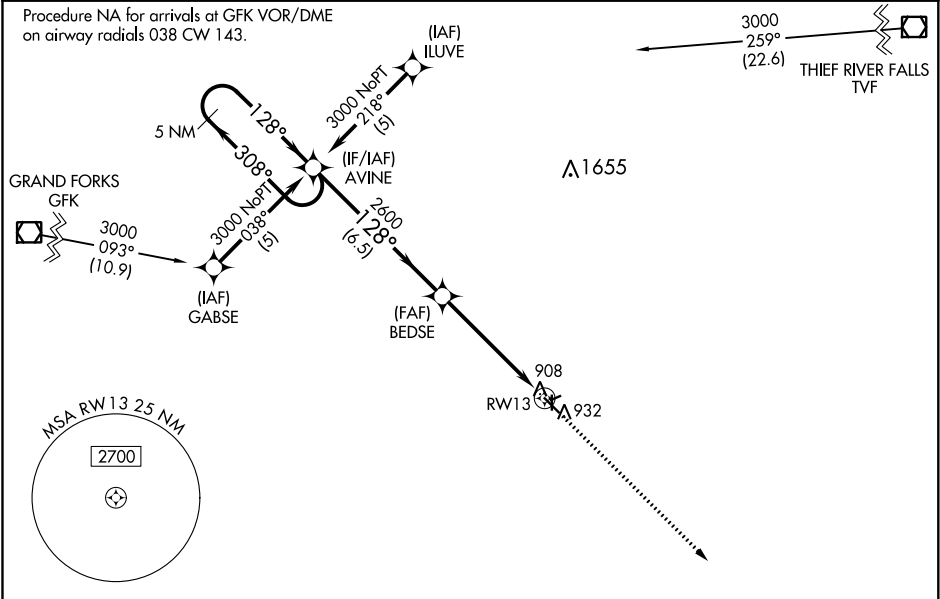
RNP APCH.

▼

Baro-VNAV NA when using Grand Forks altimeter setting. For uncompensated Baro-VNAV systems, LNAV/VNAV NA below -16°C (4°F) or above 54°C (130°F). If local altimeter setting not received, use Grand Forks altimeter setting and increase all DAs 62 feet and all MDAs 80 feet. Circling Rwy 6, 24, 17, 35 NA at night.

MISSED APPROACH: Climb to 3000 direct FAPVU and hold.

| | | | |
|--------------------------|---|---------------------------|---------------------------------|
| AWOS-3 126.425 | GRAND FORKS APP CON 118.1 318.1 | CLNC DEL 118.15 | UNICOM 122.7 (CTAF) 0 |
|--------------------------|---|---------------------------|---------------------------------|



VGSI and RNAV glidepath not coincident (VGSI Angle 3.00/TCH 30).

5 NM Holding Pattern

3000 308° 128° 128° 2600 6.5 NM 5.2 NM

GP 3.00° TCH 40

| CATEGORY | A | B | C | D |
|--------------|--------|-------------|----------------------|----|
| LPV DA | 1146-1 | 250 (300-1) | | NA |
| LNAV/VNAV DA | 1210-1 | 314 (400-1) | | NA |
| LNAV MDA | 1360-1 | 464 (500-1) | 1360-1¼ 464 (500-1¼) | NA |
| CIRCLING | 1360-1 | 460 (500-1) | 1360-1½ 460 (500-1½) | NA |