

LOC I-MKT	APP CRS	Rwy Idg	6600
108.7	331°	TDZE	1021
		Apt Elev	1021

COPTER ILS or LOC RWY 33

MANKATO RGNL (MKT)

▼

NA

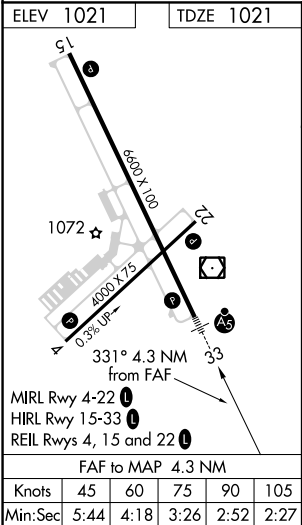
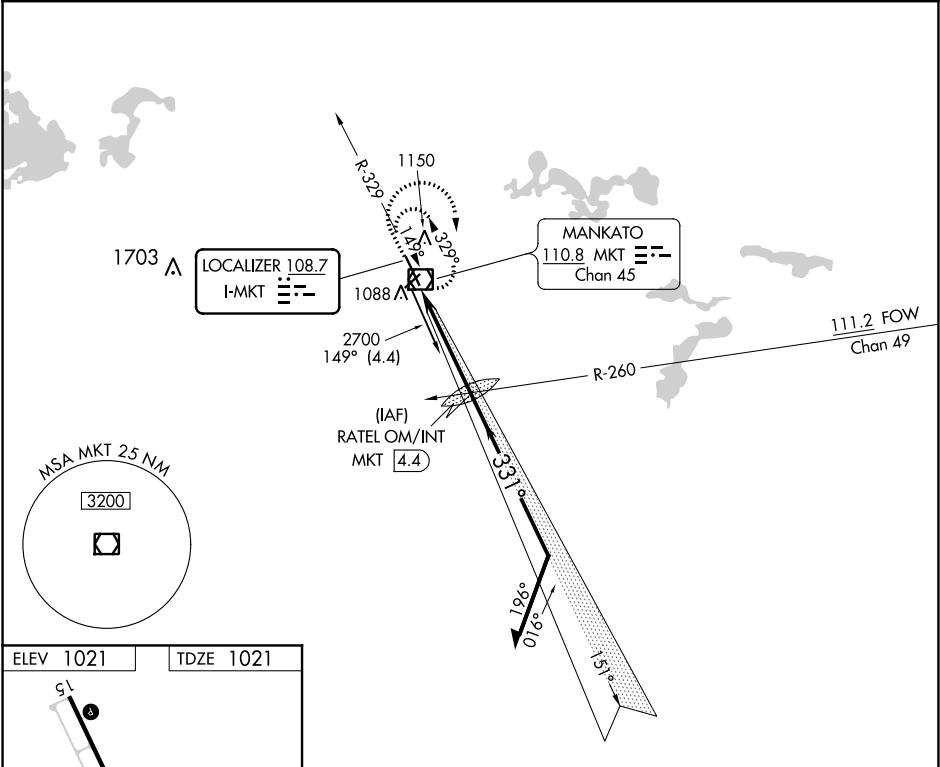
For inoperative MALSR increase visibility to ½ mile. When local altimeter setting not received, use Waseca altimeter setting: increase DA to 1278 feet; increase MDA 60 feet.

MALSR

AS

MISSED APPROACH: Climb to 2000 then climbing right turn to 2700 direct MKT VOR/DME and hold.

AWOS-3PT	MINNEAPOLIS CENTER	UNICOM
118.175	135.0 306.9	122.725 (CTAF) 0



2000	2700	MKT	RATEL OM/INT MKT 4.4	Remain within 10 NM
↑	↷	☐		
VGSI and ILS glidepath not coincident (VGSI Angle 3.00/TCH 49).				
2441				
151°				
2700				
331°				
2500				
GS 3.00° HCH 45				
4.3 NM				
CATEGORY	COPTER	B	C	D
S-ILS 33	1221-¼ 200 (200-¼)		NA	
S-LOC 33	1420-¼ 399 (400-¼)		NA	
CIRCLING	NA			