

WAAS CH 45615 W15A	APP CRS 151°	Rwy ldg 6600 TDZE 1020 Apt Elev 1021
----------------------------------------	------------------------	-----------------------------------------------------------------

RNAV (GPS) RWY 15

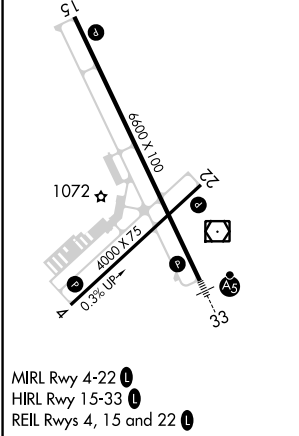
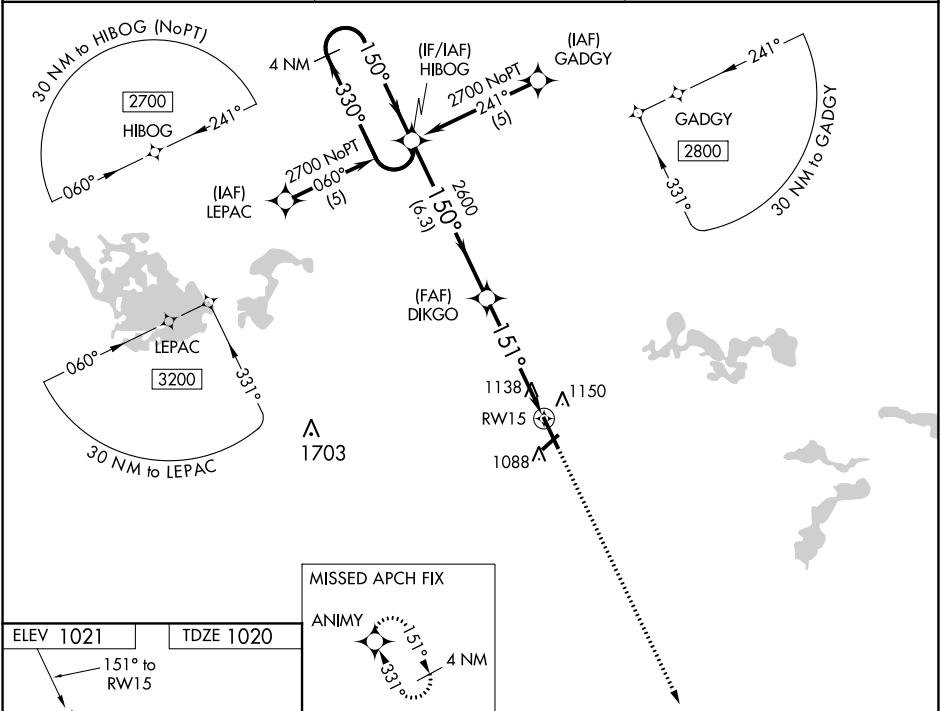
MANKATO RGNL (MKT)

Baro-VNAV NA when using Waseca altimeter setting. For uncompensated Baro-VNAV systems, LNAV/VNAV NA below -17°C (2°F) or above 46°C (114°F). DME/DME RNP-0.3 NA.

When local altimeter setting not received, use Waseca altimeter setting; increase LPV DA to 1430 feet, LNAV/VNAV DA to 1473 feet and visibility LPV ¼ mile and LNAV/VNAV ½ mile all Cats; increase all MDA 60 feet and visibility LNAV Cat C and D ¼ mile.

MISSED APPROACH:
Climb to 2900 direct
ANIMY and hold.

AWOS-3PT 118.175	MINNEAPOLIS CENTER 135.0 306.9	UNICOM 122.725 (CTAF) 1
----------------------------	------------------------------------------	-----------------------------------



MISSED APCH FIX			
ANIMY 151° 331° 4 NM			
4 NM Holding Pattern HIBOG			
2700 330° 150° 150° 2600 151° 1 NM to RWY 15 RWY 15 *1 NM Only.			
GP 3.00° TCH 48 6.3 NM 3.7 NM 1 NM			
CATEGORY	A	B	C
LPV DA		1373-1½	353 (400-1½)
LNAV/VNAV DA		1416-1¾	396 (400-1¾)
LNAV MDA		1400-1	380 (400-1)
CIRCLING	1460-1 439 (500-1)	1480-1 459 (500-1)	1480-1½ 459 (500-1½)
			1580-2 559 (600-2)